

OFFICIAL PLAN FOR THE MUNICIPALITY OF HURON SHORES

Former Townships of Thessalon, Kirkwood and Lefroy

Schedule A1 LAND USE PLAN

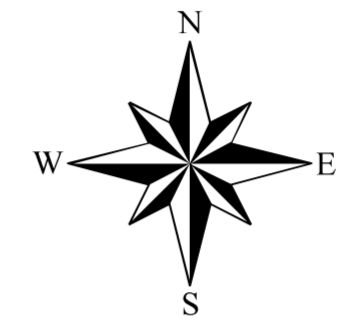
February 20, 2009

LEGEND

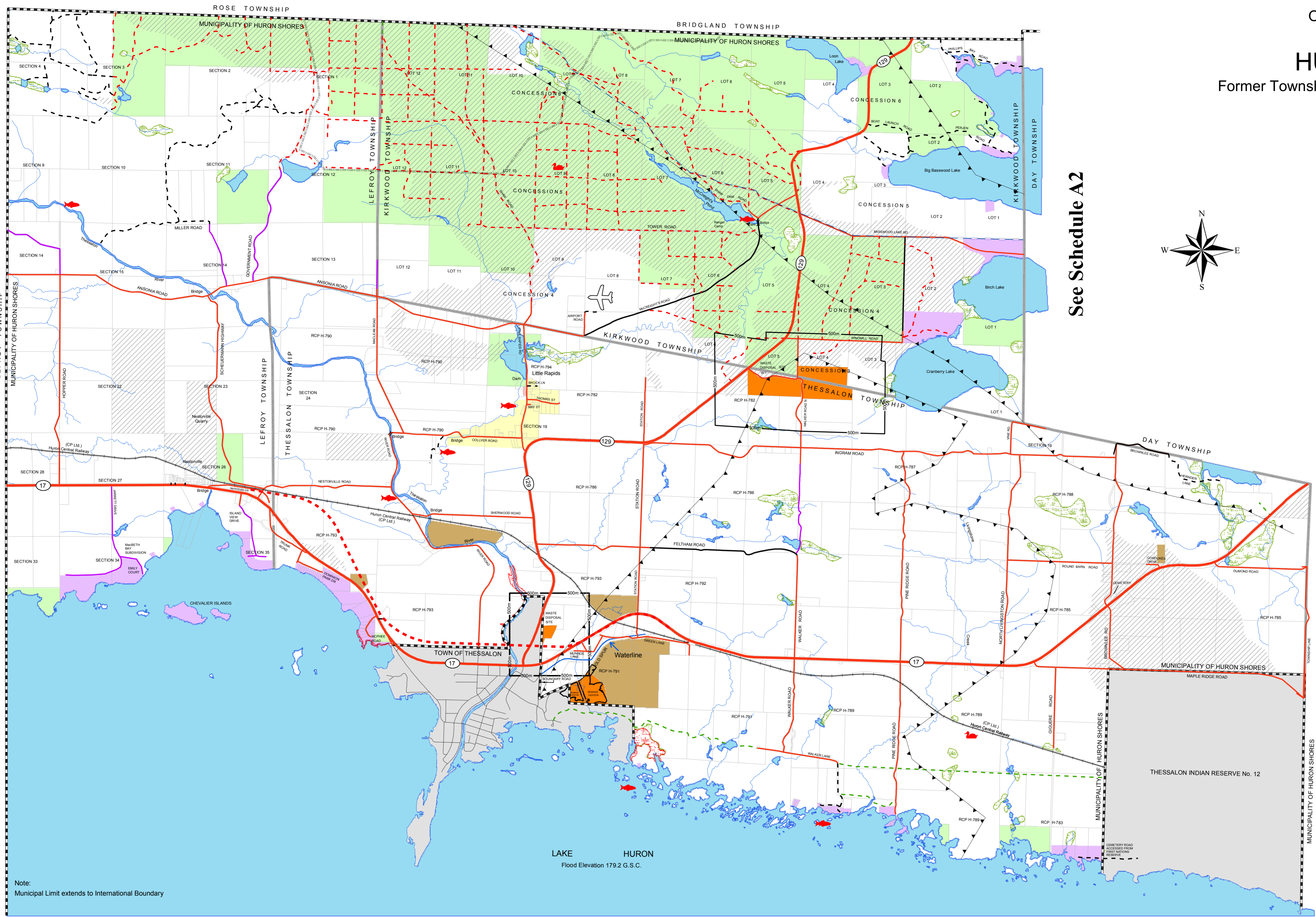
1. Land Use Designations
 - Residential Policy Area
 - Commercial Policy Area
2. Other Land Uses
 - Industrial Policy Area
 - Countryside Policy Area
 - Waterfront Policy Area
 - Mineral Aggregate Resource Policy Area
 - Mineral Aggregate Resource Overlay
 - Mineral Potential
 - Salvage Yard Use
 - Waste Management Systems Policy Area
4. Natural Heritage Features and Areas
 - Wetlands
 - Sensitive Nesting Sites
 - Fish Spawning Sites
 - Crown Land
 - Provincial Park / Conservation Reserve
5. Natural and Human Made Hazards
 - Environmental Protection Area (Flood Prone Area)
6. Transportation and Infrastructure Corridors
 - Provincial Highway
 - Proposed Future Controlled Access Highway
 - Municipal Roads**
 - Year Round Maintained
 - Seasonally Maintained
 - Unassumed / Unmaintained Roads
 - Non-Municipal Roads**
 - Resource Access Roads
 - Private Roads
 - Trails (See Notes)
 - Voyageur Trail
 - Transmission Line
 - Natural Gas Pipe Line
 - Rail Line
7. Other
 - Municipality Boundary
 - Geographic Township Boundary
 - Deer Wintering Area
 - Core Deer Habitat

Notes

1. All lands on the Lake Huron Shoreline below the elevation of 178.3 m G.S.C. (which includes a 0.5 m uprush) are deemed to be subject to a Flooding Hazard
2. A large portion of the municipality is considered to be a Deer Yard
3. The location of recreation trails may change over time



See Schedule A2



Note:
Municipal Limit extends to International Boundary

LAKE HURON
Flood Elevation 179.2 G.S.C.

