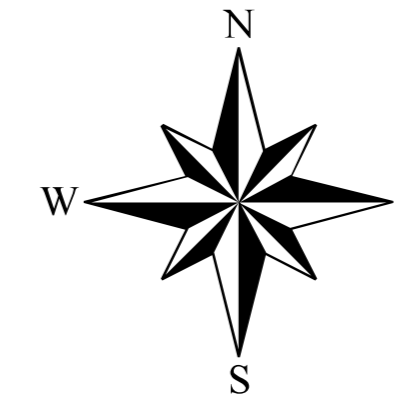


OFFICIAL PLAN FOR THE MUNICIPALITY OF HURON SHORES

Former Township of Thompson
Schedule A4
LAND USE PLAN
February 20, 2009



LEGEND

1. Land Use Designations

- Residential Policy Area
- Commercial Policy Area

2. Other Land Uses

- Industrial Policy Area
- Countryside Policy Area
- Waterfront Policy Area
- Mineral Aggregate Resource Policy Area
- Mineral Aggregate Resource Overlay
- Mineral Potential
- Salvage Yard Use
- Waste Management Systems Policy Area

4. Natural Heritage Features and Areas

- Wetlands
- Sensitive Nesting Sites
- Fish Spawning Sites
- Crown Land
- Provincial Park / Conservation Reserve

5. Natural and Human Made Hazards

- Environmental Protection Area (Flood Prone Area)

6. Transportation and Infrastructure Corridors

- Provincial Highway
- Proposed Future Controlled Access Highway
- Municipal Roads**
 - Year Round Maintained
 - Seasonally Maintained
 - Unassumed / Unmaintained Roads
- Non-Municipal Roads**
 - Resource Access Roads
 - Private Roads
 - Trails (See Notes)
 - Voyageur Trail
 - Transmission Line
 - Natural Gas Pipe Line
 - Rail Line

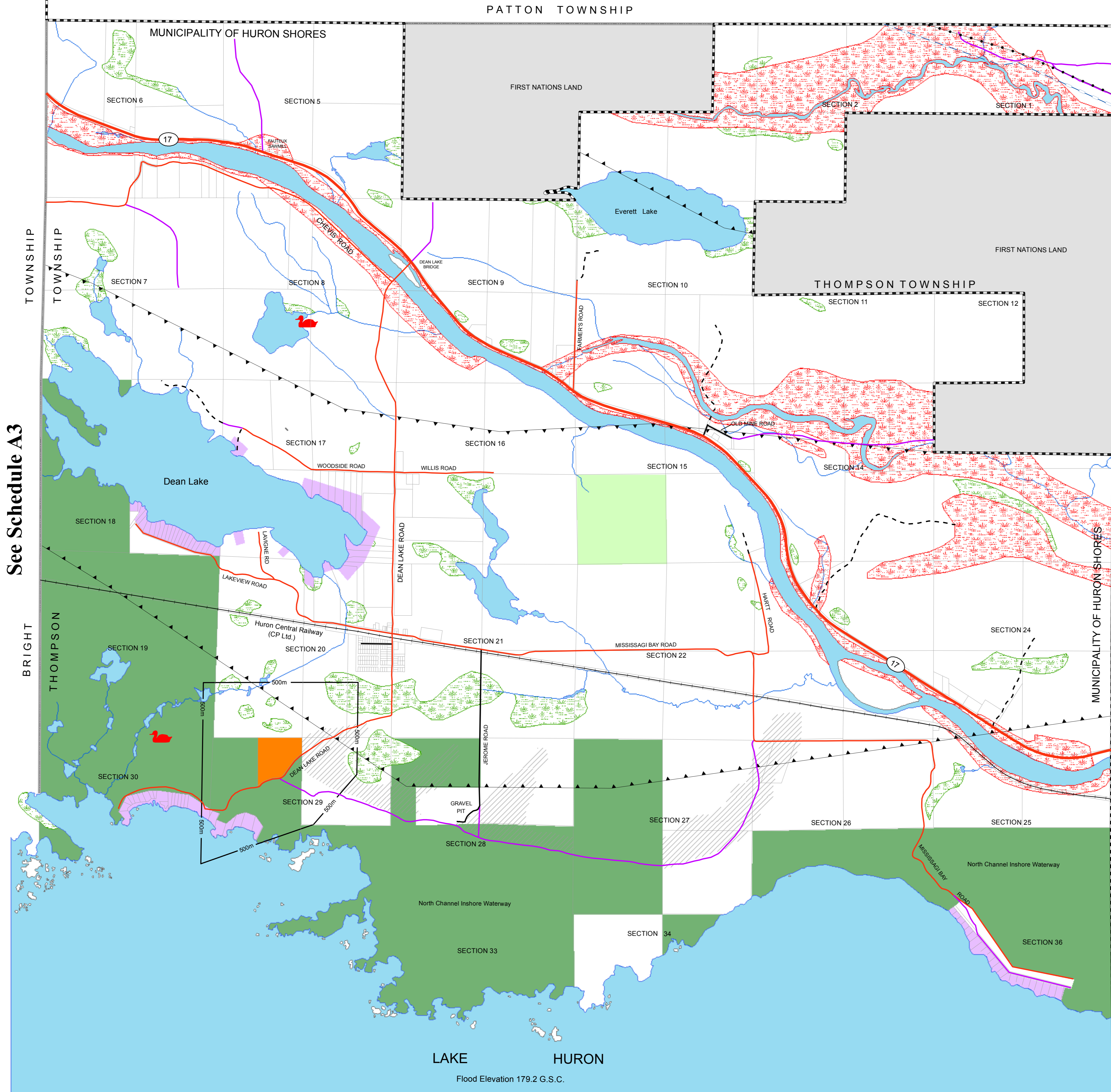
7. Other

- Municipality Boundary
- Geographic Township Boundary
- Deer Wintering Area
- Core Deer Habitat

Notes

- All lands on the Lake Huron Shoreline below the elevation of 178.3 m G.S.C (which includes a 0.5 m uprush) are deemed to be subject to a Flooding Hazard
- A large portion of the municipality is considered to be a Deer Yard
- The location of recreation trails may change over time

See Schedule A3



LAKE HURON
Flood Elevation 179.2 G.S.C.

Note:
Municipal Limit extends to International Boundary



PAUL H. TORRANCE SURVEYING LTD.
GEOMATICS SERVICES

TCL Tunnock Consulting Ltd.