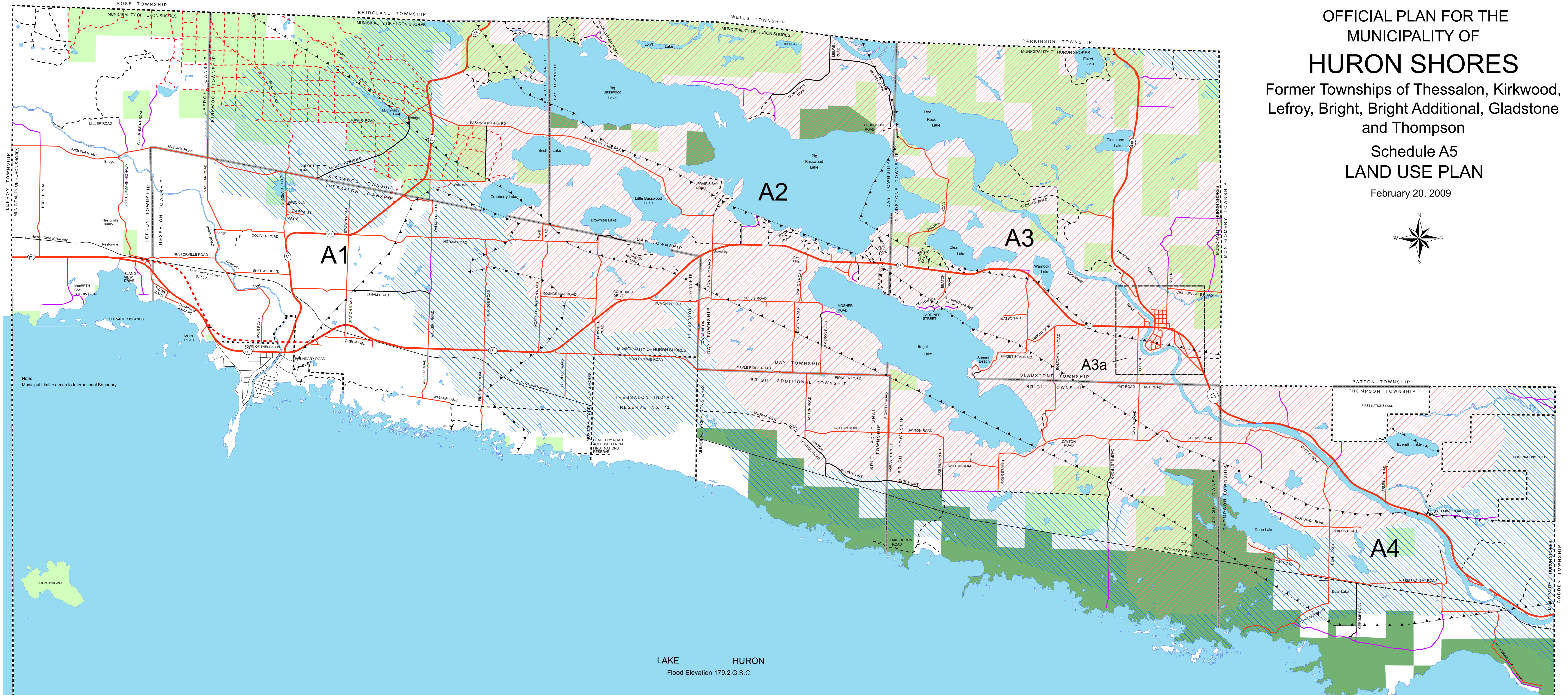
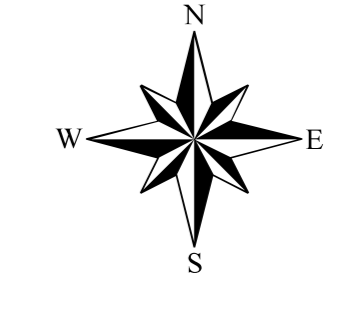


OFFICIAL PLAN FOR THE
MUNICIPALITY OF
HURON SHORES
Former Townships of Thessalon, Kirkwood,
Lefroy, Bright, Bright Additional, Gladstone
and Thompson
Schedule A5
LAND USE PLAN
February 20, 2009



Note:
Municipal Limit extends to International Boundary

LAKE HURON
Flood Elevation 179.2 G.S.C.

Note:
Municipal Limit extends to International Boundary

LEGEND

1. Land Use Designations	5. Natural and Human Made Hazards
Residential Policy Area	Environmental Protection Area (Flood Prone Area)
Commercial Policy Area	6. Transportation and Infrastructure Corridors
2. Other Land Uses	Provincial Highway
Industrial Policy Area	Proposed Future Controlled Access Highway
Countryside Policy Area	Municipal Roads
Waterfront Policy Area	Year Round Maintained
Mineral Aggregate Resource Policy Area	Seasonally Maintained
Mineral Aggregate Resource Overlay	Unassumed / Unmaintained Roads
Mineral Potential	Non-Municipal Roads
Salvage Yard Use	Resource Access Roads
Waste Management Systems Policy Area	Private Roads
600m Influence Area	Trails (See Notes)
4. Natural Heritage Features and Areas	Voyageur Trail
Wetlands	Transmission Line
Sensitive Nesting Sites	Natural Gas Pipe Line
Fish Spawning Sites	Rail Line
Crown Land	7. Other
Provincial Park / Conservation Reserve	Municipality Boundary
	Geographic Township Boundary
	Deer Wintering Area
	Core Deer Habitat

Notes

- All lands on the Lake Huron Shoreline below the elevation of 179.2 m G.S.C. (which includes a 0.5 m upland) are deemed to be subject to a Flooding Hazard
- A large portion of the municipality is considered to be a Deer Yard
- The location of recreation trails may change over time

