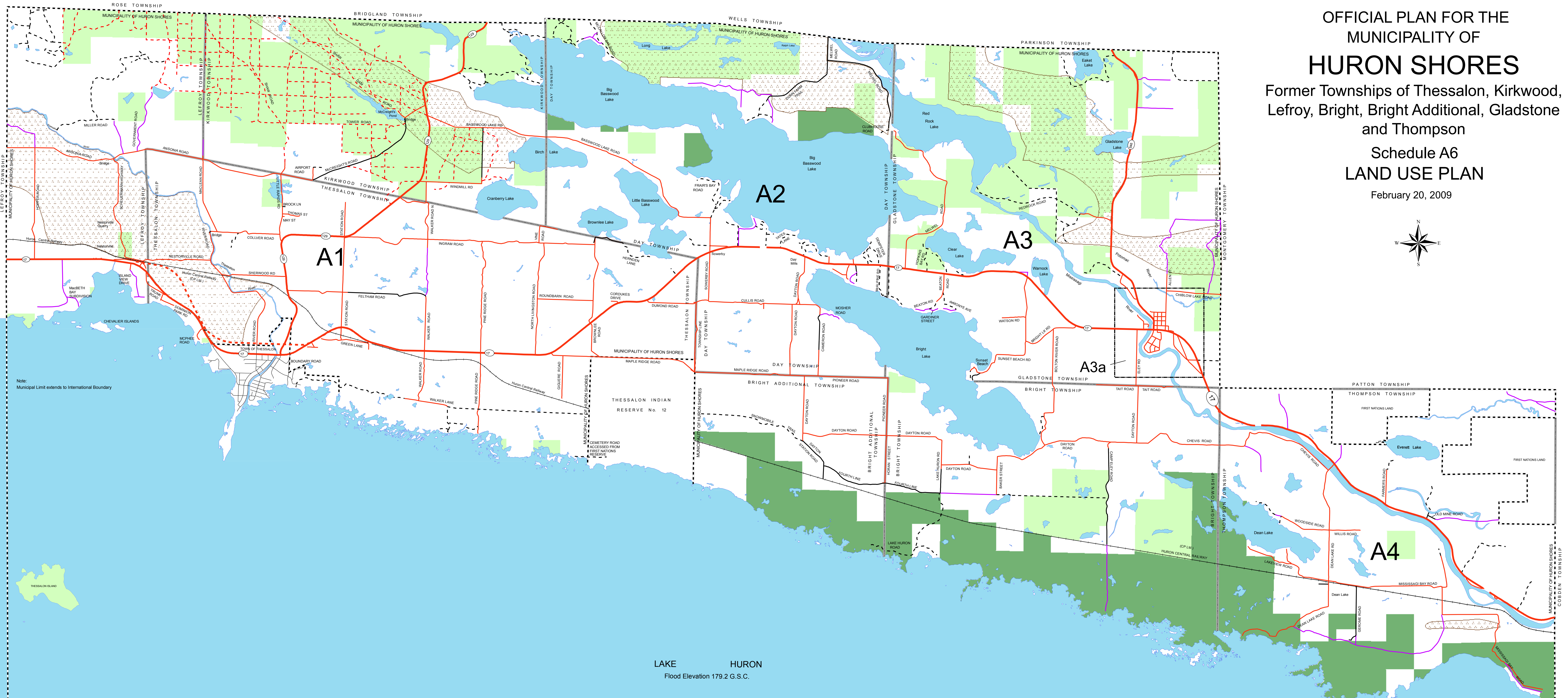
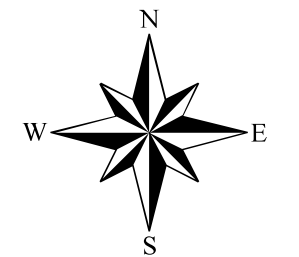


OFFICIAL PLAN FOR THE MUNICIPALITY OF HURON SHORES

Former Townships of Thessalon, Kirkwood, Lefroy, Bright, Bright Additional, Gladstone and Thompson

Schedule A6 LAND USE PLAN

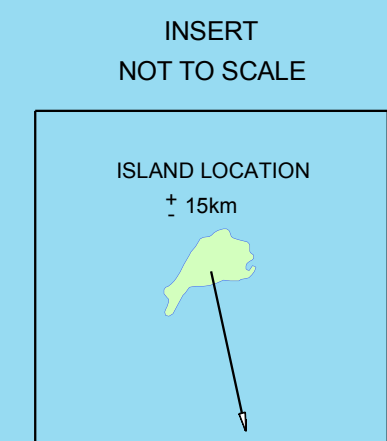
February 20, 2009



Note:
Municipal Limit extends to International Boundary

Note:
Municipal Limit extends to International Boundary

LAKE HURON
Flood Elevation 179.2 G.S.C.



LEGEND	
1. Land Use Designations	
	Residential Policy Area
	Commercial Policy Area
2. Other Land Uses	
	Industrial Policy Area
	Countryside Policy Area
	Waterfront Policy Area
	Mineral Aggregate Resource Policy Area
	Mineral Aggregate Resource Overlay
	Mineral Potential
	Salvage Yard Use
	Waste Management Systems Policy Area
	500m Influence Area
	Wetlands
	Sensitive Nesting Sites
	Fish Spawning Sites
	Crown Land
	Provincial Park / Conservation Reserve
3. Natural and Human Made Hazards	
	Environmental Protection Area (Flood Prone Area)
6. Transportation and Infrastructure Corridors	
	Provincial Highway
	Proposed Future Controlled Access Highway
Municipal Roads	
	Year Round Maintained
	Seasonally Maintained
	Unassumed / Unmaintained Roads
Non-Municipal Roads	
	Resource Access Roads
	Private Roads
	Trails (See Notes)
	Voyageur Trail
	Transmission Line
	Natural Gas Pipe Line
	Rail Line
7. Other	
	Municipality Boundary
	Geographic Township Boundary
	Deer Wintering Area
	Core Deer Habitat
Notes	
1. All lands on the Lake Huron Shoreline below the elevation of 178.3 m G.S.C. (which includes a 0.5 m uprush) are deemed to be subject to a flooding hazard.	
2. A large portion of the municipality is considered to be a Deer Yard.	
3. The location of recreation trails may change over time.	

