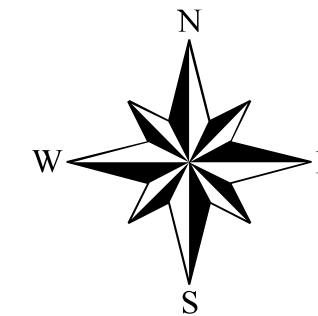
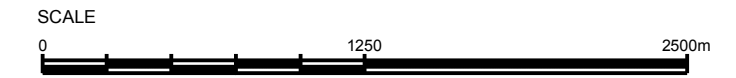


OFFICIAL PLAN FOR THE
MUNICIPALITY OF
HURON SHORES
Former Townships of Thessalon, Kirkwood and Lefroy
Schedule A1
LAND USE PLAN

July 20, 2011



See Schedule A2

LEGEND

1. Land Use Designations

- Residential Policy Area
- Commercial Policy Area
- Industrial Policy Area
- Countryside Policy Area
- Waterfront Policy Area
- Mineral Aggregate Resource Policy Area
- Waste Management Systems Policy Area
- 500m Influence Area

2. Other Land Uses

- Mineral Aggregate Resource Overlay (See Schedule A6)
- Mineral Potential

3. Natural Heritage Features and Areas

- Unclassified Wetlands
- Sensitive Nesting Sites
- Fish Spawning Sites
- Lake Trout Lake
- Crown Land

4. Natural and Human Made Hazards

- Environmental Protection Area (Flood Prone Area)
- Mine Hazard

5. Transportation and Infrastructure Corridors

- Provincial Highway
- Proposed Future Controlled Access Highway
- Municipal Roads
 - Year Round Maintained
 - Seasonally Maintained
 - Unassumed and/or Unmaintained Roads
- Non-Municipal Roads
 - Resource Access Roads
 - Private Roads
 - Trails (See Notes)
 - Voyageur Trail
 - Transmission Line
 - Natural Gas Pipe Line
 - Rail Line
 - Airport

- 6. Other
 - Municipality Boundary
 - Geographic Township Boundary
 - Core Deer Habitat (See Schedule A5)

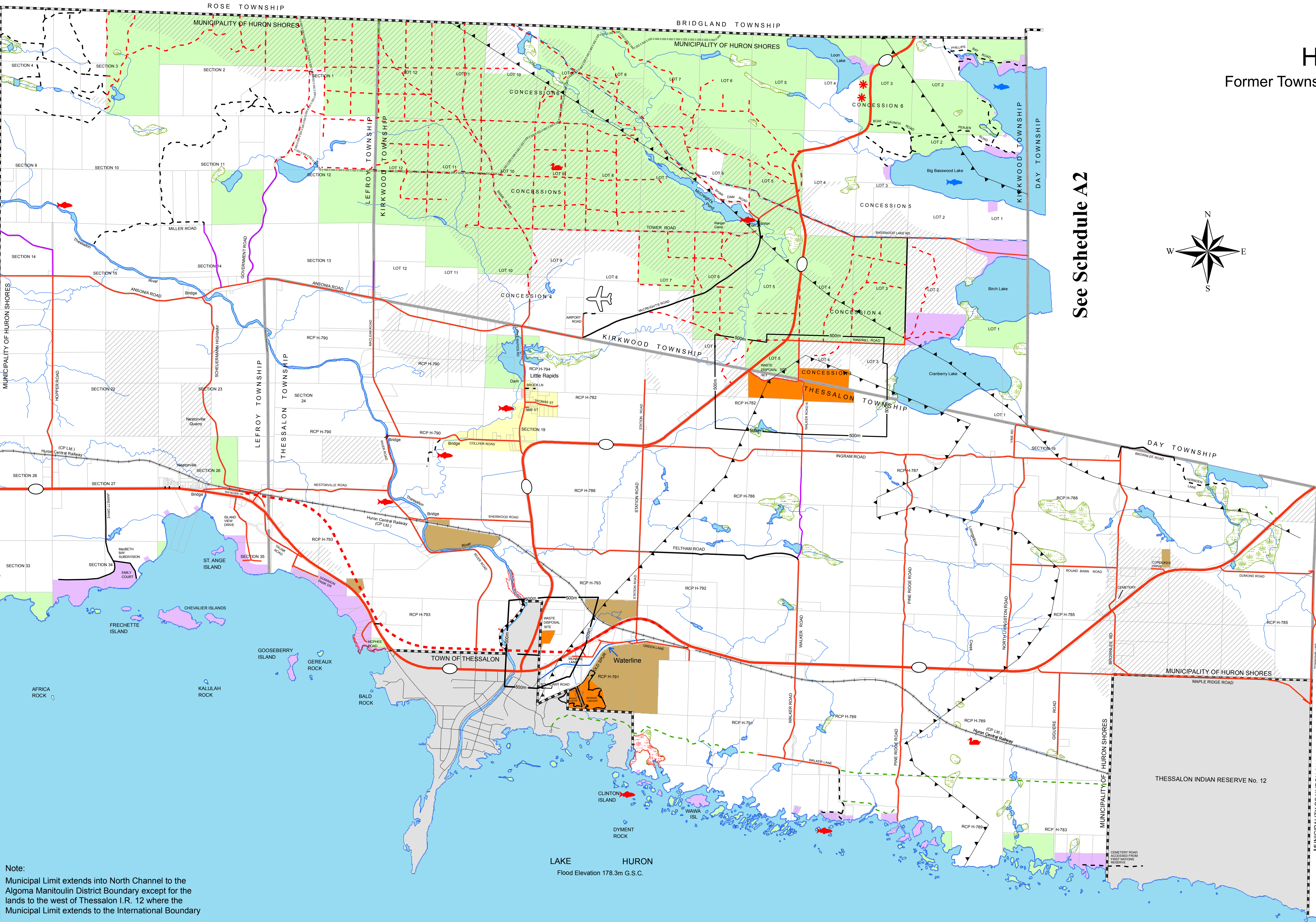
Notes

- All lands on the Lake Huron Shoreline below the elevation of 178.3 m G.S.C. (which includes a 0.5 m uprush) are deemed to be subject to a Flooding Hazard
- The location of recreation trails may change over time
- All islands are crown land unless otherwise shown.
- See Schedules A5 and A6 for the location of islands in the North Channel that are part of the Municipality of Huron Shores.



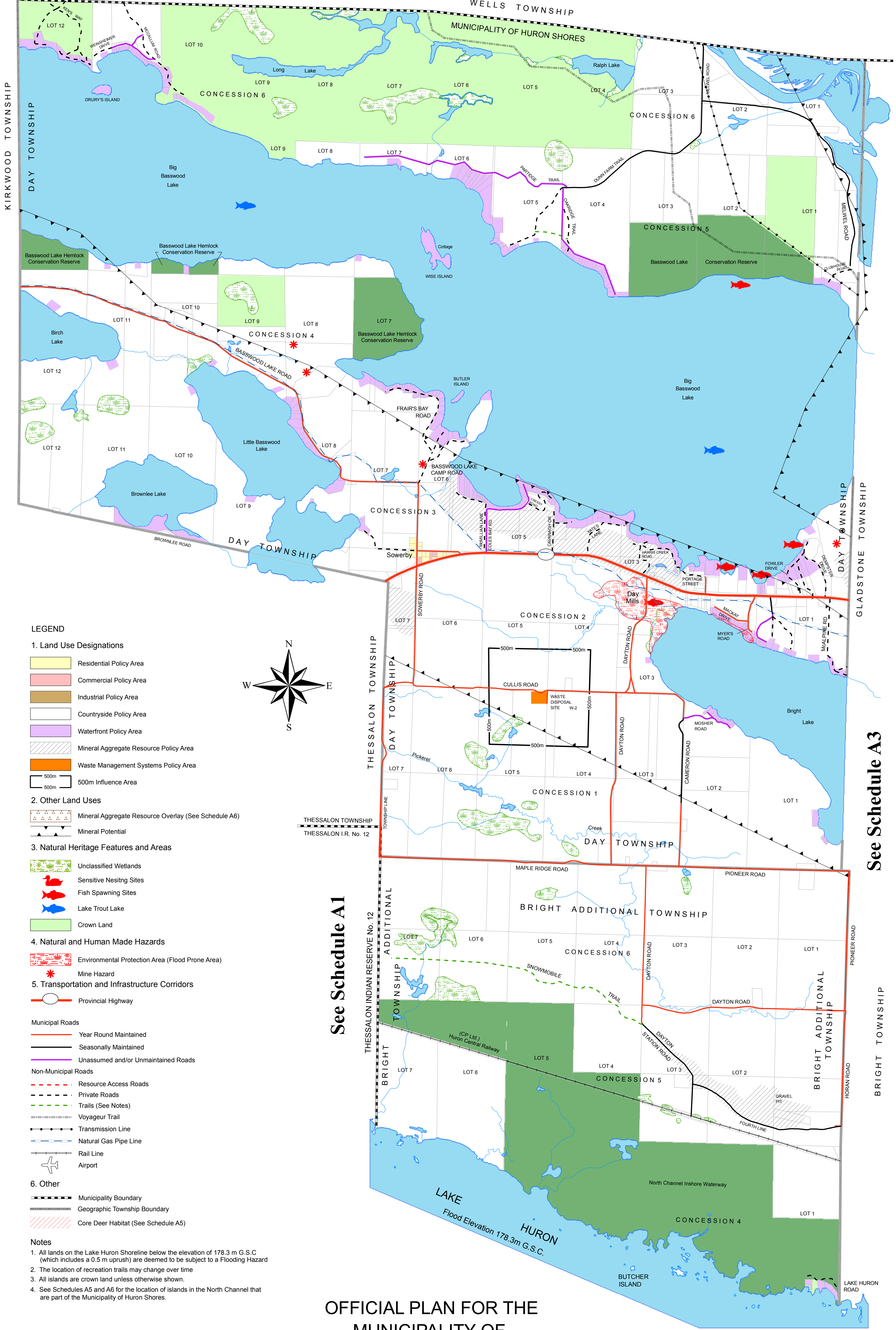
PAUL H. TORRANCE SURVEYING LTD.
GEOMATICS SERVICES

TCL Tunnock Consulting Ltd.



Note:
Municipal Limit extends into North Channel to the Algoma Manitoulin District Boundary except for the lands to the west of Thessalon I.R. 12 where the Municipal Limit extends to the International Boundary

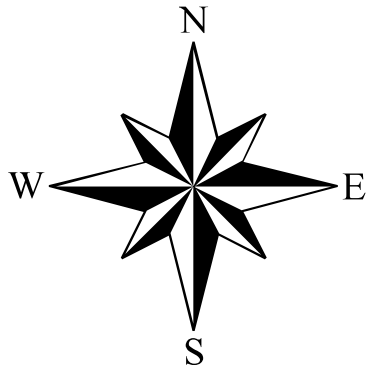
LAKE HURON
Flood Elevation 178.3m G.S.C.



- LEGEND**
- 1. Land Use Designations**
- Residential Policy Area
 - Commercial Policy Area
 - Industrial Policy Area
 - Countryside Policy Area
 - Waterfront Policy Area
 - Mineral Aggregate Resource Policy Area
 - Waste Management Systems Policy Area
 - 500m Influence Area
- 2. Other Land Uses**
- Mineral Aggregate Resource Overlay (See Schedule A6)
 - Mineral Potential
- 3. Natural Heritage Features and Areas**
- Unclassified Wetlands
 - Sensitive Nesting Sites
 - Fish Spawning Sites
 - Lake Trout Lake
 - Crown Land
- 4. Natural and Human Made Hazards**
- Environmental Protection Area (Flood Prone Area)
 - Mine Hazard
- 5. Transportation and Infrastructure Corridors**
- Provincial Highway
- Municipal Roads**
- Year Round Maintained
 - Seasonally Maintained
 - Unassumed and/or Unmaintained Roads
- Non-Municipal Roads**
- Resource Access Roads
 - Private Roads
 - Trails (See Notes)
 - Voyageur Trail
 - Transmission Line
 - Natural Gas Pipe Line
 - Rail Line
 - Airport
- 6. Other**
- Municipality Boundary
 - Geographic Township Boundary
 - Core Deer Habitat (See Schedule A5)

Notes

- All lands on the Lake Huron Shoreline below the elevation of 178.3 m G.S.C. (which includes a 0.5 m uprush) are deemed to be subject to a Flooding Hazard
- The location of recreation trails may change over time
- All islands are crown land unless otherwise shown.
- See Schedules A5 and A6 for the location of islands in the North Channel that are part of the Municipality of Huron Shores.



See Schedule A1

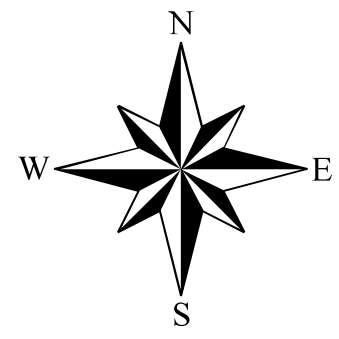
See Schedule A3

OFFICIAL PLAN FOR THE
MUNICIPALITY OF
HURON SHORES
Former Townships of Bright Additional and Day
Schedule A2
LAND USE PLAN
July 20, 2011



PAUL H. TORRANCE SURVEYING LTD.
GEOMATICS SERVICES

TCL
Tunnock Consulting Ltd.



See Schedule A2

See Schedule A4

- LEGEND**
- 1. Land Use Designations:**
- Residential Policy Area
 - Commercial Policy Area
 - Industrial Policy Area
 - Countryside Policy Area
 - Waterfront Policy Area
 - Mineral Aggregate Resource Policy Area
 - Water Management Systems Policy Area
 - 500m Influence Area
- 2. Other Land Uses:**
- Mineral Aggregate Resource Overlay (See Schedule A3)
 - Mineral Potential
- 3. Natural Heritage Features and Areas:**
- Undisturbed Wetlands
 - Sensitive Wetland Sites
 - Fish Spawning Sites
 - Lake Trout Lake
 - Crown Land
 - Significant Wildlife Habitat: Bald Eagle Feeding Area
- 4. Natural and Human Made Hazards:**
- Environmental Protection Area (Flood Plain Area)
 - Mine Hazard
- 5. Transportation and Infrastructure Corridors:**
- Provincial Highway
- Municipal Roads:**
- Year Round Maintained
 - Seasonally Maintained
 - Unimproved and/or Unimproved Roads
- Non-Municipal Roads:**
- Resource Access Roads
 - Private Roads
 - Trails (See Notes)
 - Voyageur Trail
 - Transmission Line
 - Natural Gas Pipe Line
 - Rail Line
 - Airport
- 6. Other:**
- Municipality Boundary
 - Geographic Township Boundary
 - Core Deer Habitat (See Schedule A5)

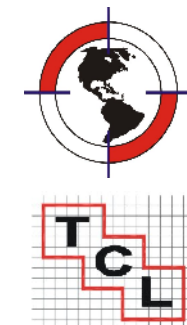
Notes:

- All lands on the Lake Huron Shoreline below the elevation of 172.3 m O.S.C. (which includes a 0.5 m uprush) are deemed to be subject to a Flooding Hazard.
- The location of recreation trails may change over time.
- All islands are crown land unless otherwise shown.
- See Schedules A5 and A6 for the location of islands in the North Channel that are part of the Municipality of Huron Shores.

OFFICIAL PLAN FOR THE
MUNICIPALITY OF
HURON SHORES
Former Townships of Gladstone and Bright
Schedule A3
LAND USE PLAN

July 20, 2011 Revised December 16, 2011 by MMAH Modification #27(c)

SCALE
0 1250 2500m

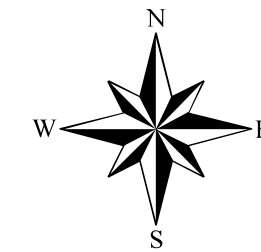


PAUL H. TORRANCE SURVEYING LTD.
GEOMATICS SERVICES

Tunnock Consulting Ltd.

OFFICIAL PLAN FOR THE
MUNICIPALITY OF
HURON SHORES
IRON BRIDGE (WARD 3)
Schedule A3a
LAND USE PLAN

July 20, 2011



LEGEND

1. Land Use Designations

- Residential Policy Area
- Commercial Policy Area
- Industrial Policy Area
- Countryside Policy Area
- Waterfront Policy Area
- Mineral Aggregate Resource Policy Area
- Waste Management Systems Policy Area
- 500m Influence Area

2. Other Land Uses

- Mineral Aggregate Resource Overlay (See Schedule A6)
- Mineral Potential

3. Natural Heritage Features and Areas

- Unclassified Wetlands
- Sensitive Nesting Sites
- Fish Spawning Sites
- Lake Trout Lake
- Crown Land

4. Natural and Human Made Hazards

- Environmental Protection Area (Flood Prone Area)

5. Transportation and Infrastructure Corridors

- Provincial Highway

Municipal Roads

- Year Round Maintained
- Seasonally Maintained
- Unassumed and/or Unmaintained Roads

Non-Municipal Roads

- Resource Access Roads
- Private Roads
- Trails (See Notes)
- Voyageur Trail
- Transmission Line
- Natural Gas Pipe Line
- Rail Line
- Airport

6. Other

- Municipality Boundary
- Geographic Township Boundary
- Core Deer Habitat (See Schedule A5)

Notes

- All lands on the Lake Huron Shoreline below the elevation of 178.3 m G.S.C (which includes a 0.5 m uprush) are deemed to be subject to a Flooding Hazard
- The location of recreation trails may change over time
- All islands are crown land unless otherwise shown.
- See Schedules A5 and A6 for the location of islands in the North Channel that are part of the Municipality of Huron Shores.



PAUL H. TORRANCE SURVEYING LTD.
GEOMATICS SERVICES

TCL
Tunnock Consulting Ltd.

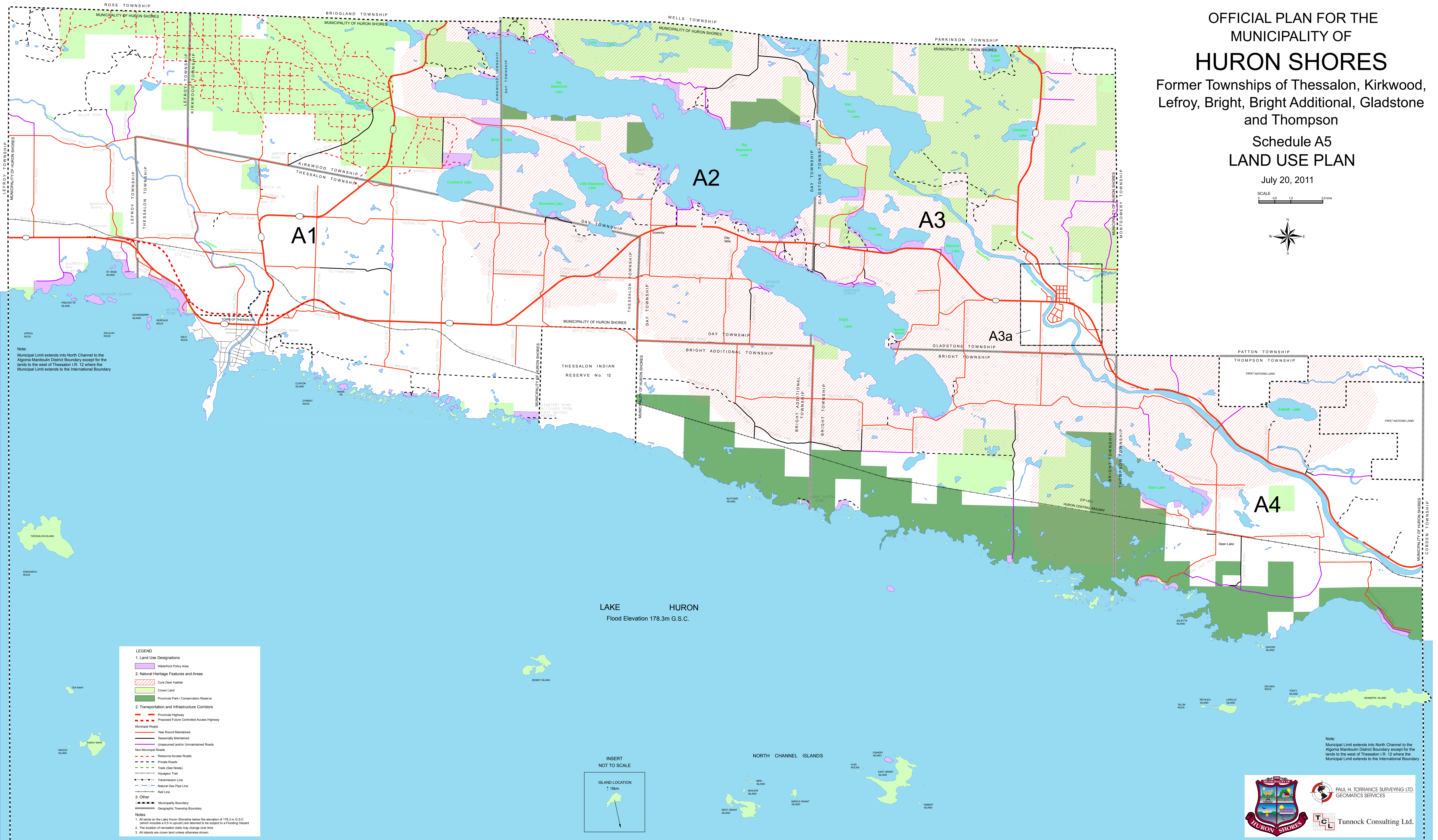
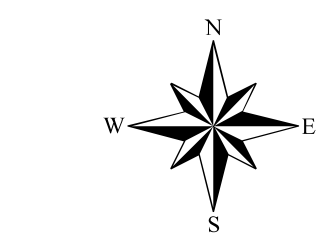
OFFICIAL PLAN FOR THE MUNICIPALITY OF HURON SHORES

Former Townships of Thessalon, Kirkwood,
Lefroy, Bright, Bright Additional, Gladstone
and Thompson

Schedule A5 LAND USE PLAN

July 20, 2011

SCALE 0 5 10 20 km



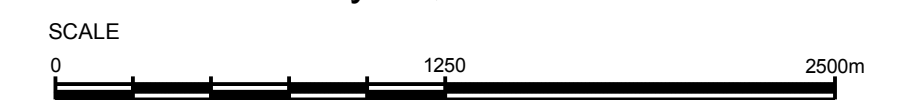
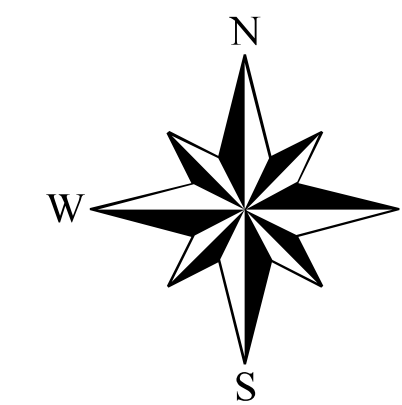
Note:
Municipal Limit extends into North Channel to the
Algoma Manitoulin District Boundary except for the
lands to the west of Thessalon I.R. 12 where the
Municipal Limit extends to the International Boundary



PAUL H. TORRANCE SURVEYING LTD.
GEOMATICS SERVICES
TCL Tunnock Consulting Ltd.

OFFICIAL PLAN FOR THE
MUNICIPALITY OF
HURON SHORES
Former Township of Thompson
Schedule A4
LAND USE PLAN

July 20, 2011



LEGEND

1. Land Use Designations

- Residential Policy Area
- Commercial Policy Area
- Industrial Policy Area
- Countryside Policy Area
- Waterfront Policy Area
- Mineral Aggregate Resource Policy Area
- Waste Management Systems Policy Area
- 500m Influence Area

2. Other Land Uses

- Mineral Aggregate Resource Overlay (See Schedule A6)
- Mineral Potential

3. Natural Heritage Features and Areas

- Unclassified Wetlands
- Sensitive Nesting Sites
- Fish Spawning Sites
- Lake Trout Lake
- Crown Land

4. Natural and Human Made Hazards

- Environmental Protection Area (Flood Prone Area)
- Mine Hazard

5. Transportation and Infrastructure Corridors

- Provincial Highway
- Proposed Future Controlled Access Highway
- Municipal Roads
 - Year Round Maintained
 - Seasonally Maintained
 - Unassumed and/or Unmaintained Roads
- Non-Municipal Roads
 - Resource Access Roads
 - Private Roads
 - Trails (See Notes)
 - Voyageur Trail
- Transmission Line
- Natural Gas Pipe Line
- Rail Line
- Airport

6. Other

- Municipality Boundary
- Geographic Township Boundary
- Core Deer Habitat (See Schedule A5)

Notes

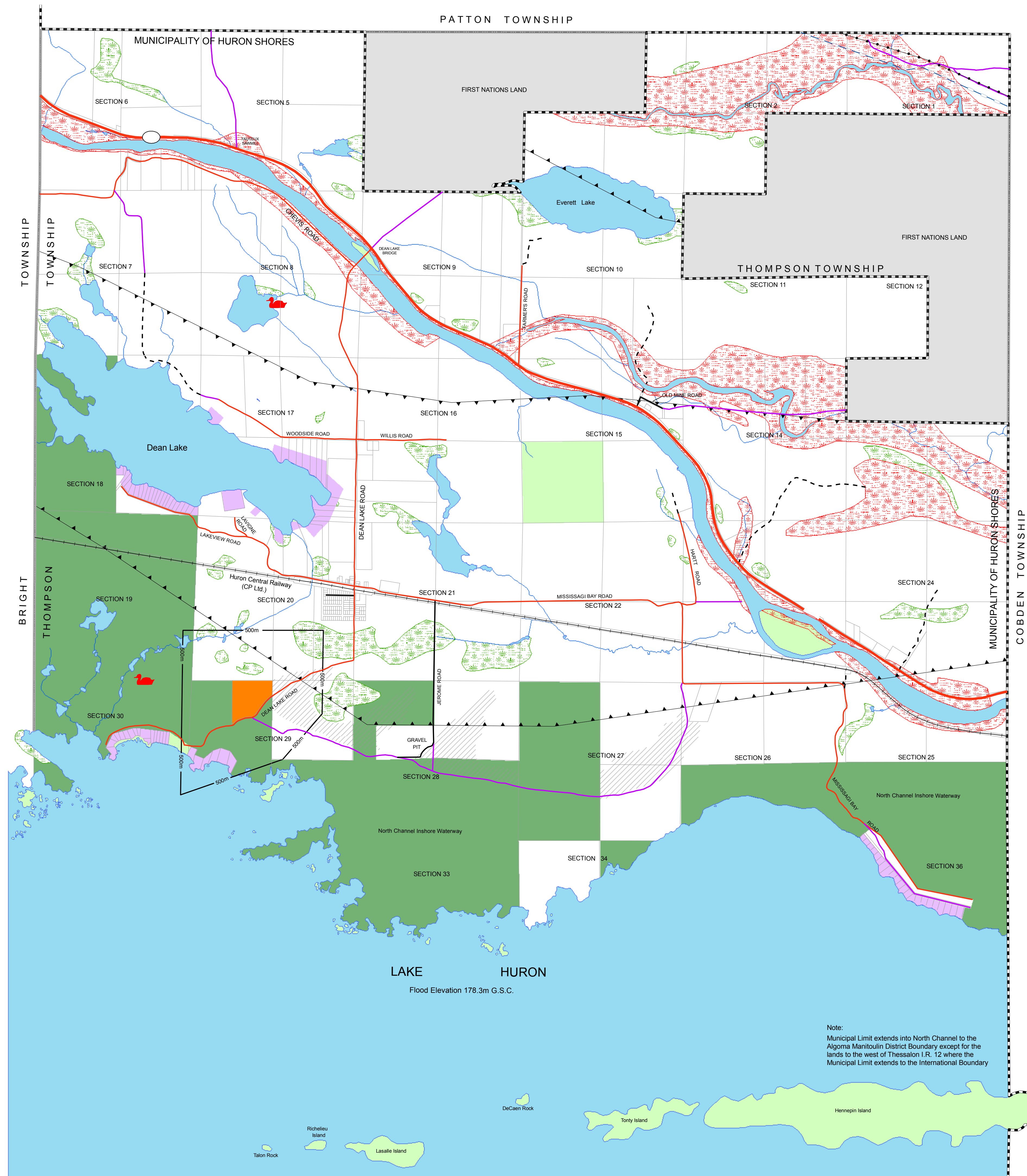
- All lands on the Lake Huron Shoreline below the elevation of 178.3 m G.S.C. (which includes a 0.5 m uprush) are deemed to be subject to a Flooding Hazard
- The location of recreation trails may change over time
- All islands are crown land unless otherwise shown.
- See Schedules A5 and A6 for the location of islands in the North Channel that are part of the Municipality of Huron Shores.



PAUL H. TORRANCE SURVEYING LTD.
GEOMATICS SERVICES

TCL Tunnock Consulting Ltd.

See Schedule A3



OFFICIAL PLAN FOR THE
MUNICIPALITY OF

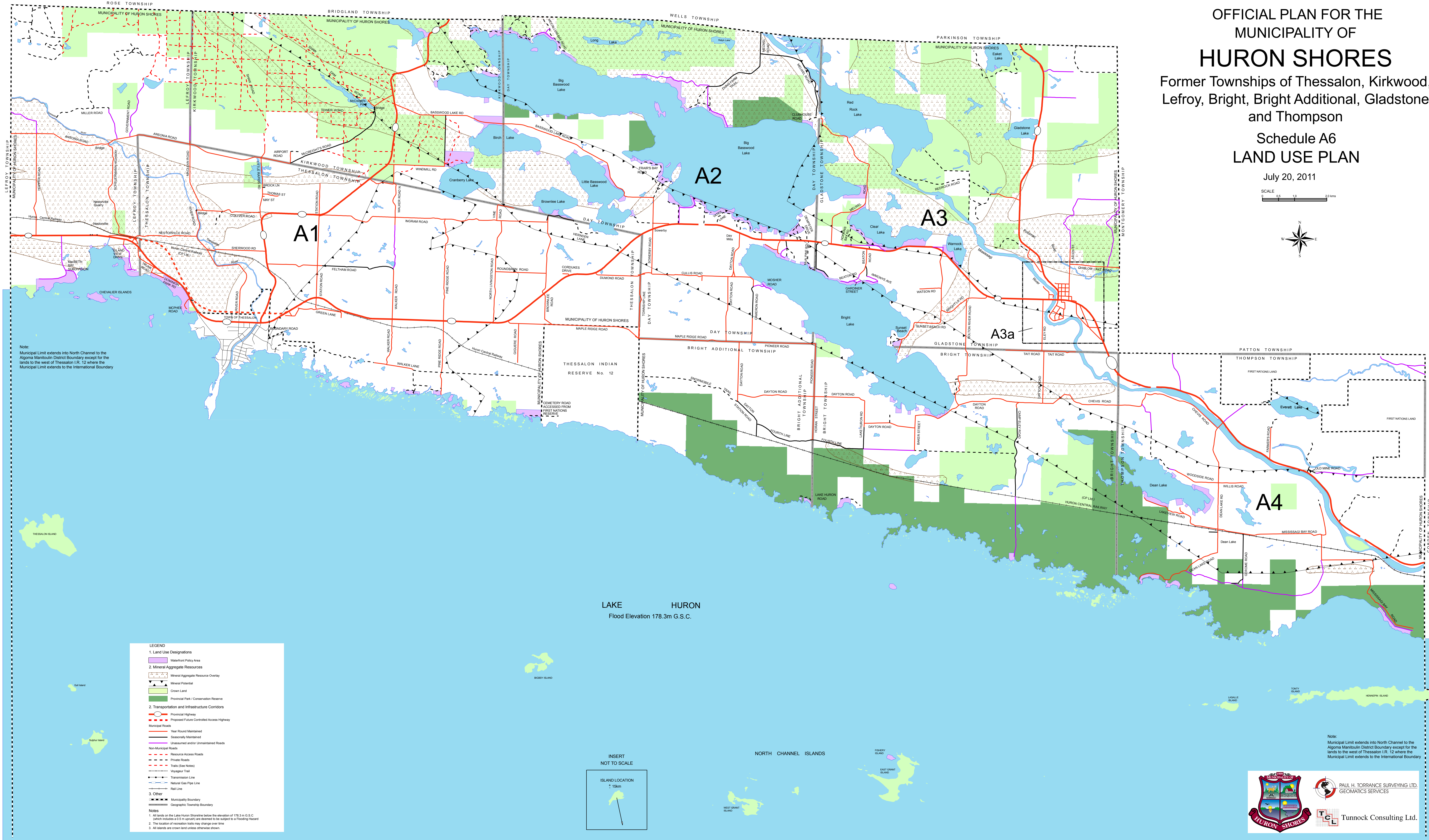
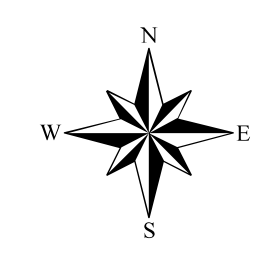
HURON SHORES

Former Townships of Thessalon, Kirkwood,
Lefroy, Bright, Bright Additional, Gladstone
and Thompson

Schedule A6 LAND USE PLAN

July 20, 2011

SCALE 0 5 10 20 km



Note:
Municipal Limit extends into North Channel to the
Algoma Manitoulin District Boundary except for the
lands to the west of Thessalon I.R. 12 where the
Municipal Limit extends to the International Boundary

LAKE HURON
Flood Elevation 178.3m G.S.C.

LEGEND

1. Land Use Designations

- Waterfront Policy Area
- Mineral Aggregate Resources
- Mineral Aggregate Resource Overlay
- Mineral Potential
- Crown Land
- Provincial Park / Conservation Reserve

2. Transportation and Infrastructure Corridors

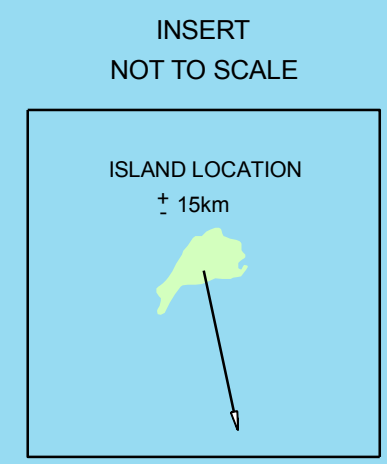
- Provincial Highway
- Proposed Future Controlled Access Highway
- Municipal Roads
- Year Round Maintained
- Seasonally Maintained
- Unassumed and/or Unmaintained Roads
- Non-Municipal Roads
- Resource Access Roads
- Private Roads
- Trails (See Notes)
- Vegetated Trail
- Transmission Line
- Natural Gas Pipe Line
- Rail Line

3. Other

- Municipality Boundary
- Geographic Township Boundary

Notes

- All lands on the Lake Huron Shores below the elevation of 178.3 m G.S.C. (which includes a 0.5 m sprawl) are deemed to be subject to a Flooding Hazard
- The location of recreation trails may change over time
- All islands are crown land unless otherwise shown



Note:
Municipal Limit extends into North Channel to the
Algoma Manitoulin District Boundary except for the
lands to the west of Thessalon I.R. 12 where the
Municipal Limit extends to the International Boundary