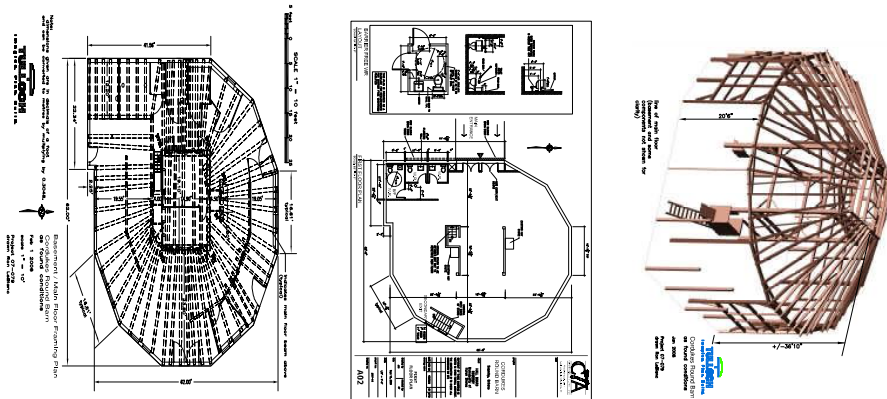


# The 12-Sided Barn...Progress to July 2011



1. The project started in **July 2007** by recording and drafting the original structure. This was done by the generous contributions of Chris Tossel (Architect) and Ron LeBlanc (M F Tulloch Inc.).



2. In **September 2007**, Colin Trivers donated his time to survey the new property located beside and north of the Sowerby Hall. Clayton and Heather Senecal donated 2.1 acres to the Municipality for the barn relocation. This Land transfer was completed in January 2008.
3. During **2008**, the revised plans for the barn were completed to make it compliant with codes for public buildings. Jon Radojkovic was hired to dismantle the barn and reconstruct it at the new site.
4. In **April 2009**, Bob Wood of M R Wright and Associates, drew up the engineered plans for the floor and foundation walls.



5. **May 2009 – Engineering, Excavation and Form Construction**
  - a) Ron MacDonald donated his time and machine to excavate the foundation site.
  - b) Tulloch Engineering surveyed the excavation to locate the corners of the floor.
  - c) Volunteers placed gravel in preparation for the cement floor and footings.
  - d) Gordon and Marjorie Hern donated 16 Spruce trees (cut and removed by volunteers) to be sawn into  $\frac{3}{4}$ " lumber by Don Dallimore for the wall forms
  - e) Tom Young, from St. Joeseph Island, was secured to form and pour the floor and walls.

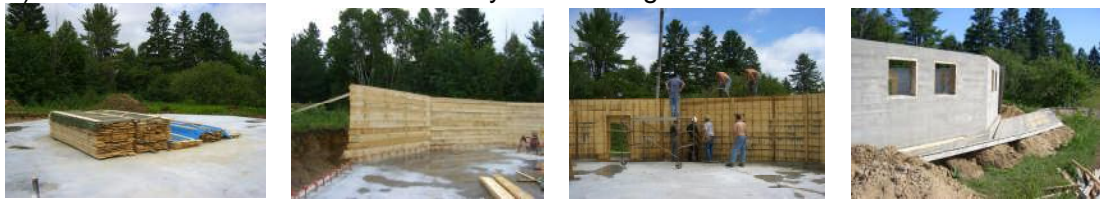


**6. June 2009 - Floor Construction**

- a) The forms for the floor were put in place and volunteers dug out the post locations and footings.
- b) Don Dallimore donated time on his sawmill and, along with volunteers, the rest of the logs from the Hern's farm were cut into the required lumber.
- c) The survey crew returned to verify all corners, the reinforcing steel was put in place and, on June 29<sup>th</sup>, 100 cubic yards of concrete were poured for the floor. Volunteers watered the new floor for the next 3 days (to slow down the curing).

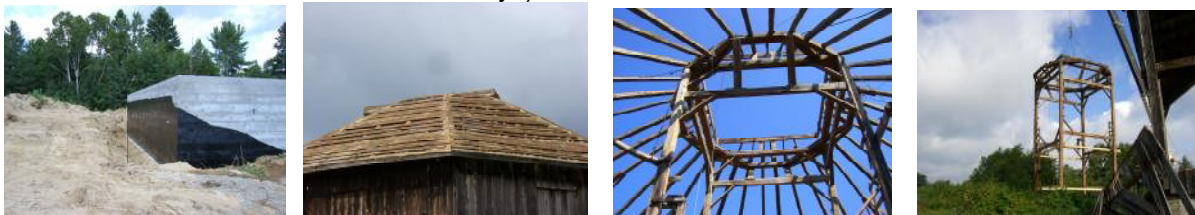
**7. July 2009 – Basement Wall Construction**

- a) The lumber was moved by volunteers from the Hern property to the foundation site to form the walls
- b) The wall forms were constructed by Tom Young and volunteers.



**8. August 2009 – Wall Construction and Barn Dismantled**

- a) The walls were poured on August 4<sup>th</sup>, using approximately 50 cubic yards of concrete.
- b) On August 5<sup>th</sup>, volunteers and the Yoders removed the forms.
- c) Volunteers put the drainage tiling in place and the foundation was tarred. Ron MacDonald back-filled to the tar line.
- d) From Aug 11<sup>th</sup> to the 20<sup>th</sup> the Barn was dismantled and all good parts were salvaged. Sterling Crane of Sault Ste Marie supplied a 10-ton crane for the cost of the fuel (the crane was on site for three days).



**9. September 2009 – Central Basement Walls and Stairwell**

- a) Blocks arrived for the central walls and stairwell.
- c) Block work was completed by Amish and volunteers.
- d) Volunteers brought Hemlock 2x10's from Adrien Fauteux's Mill to the new barn site for construction of the plate (on top of the cement walls to support the new floor timbers).



10. **October 2009 – Waiting for the Floor Timbers to Arrive**

- a) Volunteers cut donated logs for the sub-floor lumber. A layer of 2"x10" planks will be covered by a second layer of 1-inch planks. (Later, a finished pine floor will cover these 2 layers.)
- b) 66 timbers for the new floor joists (sleepers) were unavailable due to the wet weather. (Loggers could not get into the bush for the Red Pine that was needed.)
- c) Replacement material for the rotten and damaged parts of the original barn was ordered. It was allowed to dry over the winter for the reconstruction in August/September 2010.

## Year 2010



11. **June 2010 – Logs for the floor structure**

- a) Out to forest site to measure and mark the logs with the help of Bruce Goodmurphy. The logs were transported to the mill.
- b) Volunteers spent three days debarking the logs at Adrien Fauteux's Mill.
- c) The logs were cut on two sides (10 inches thick) ready for placement on the foundation at Sowerby.



12. **July 2010 – Material moved from old site and mill to Sowerby and floor structure was put in place**

- a) All the salvaged material was moved to Sowerby.
- b) With the help of Sterling Crane the logs were put in place on the foundation walls, ready for the floor.

**With the help of 5 volunteers (Dave Currie, Ron Trivers, Will Samis, Real Levesque, David Ratz) and the Amish working 7 days a week for the next 6 weeks the barn went up!**





**13. August 2010 – Barn floor is completed (first two layers).**

- a) Floor was put in place, one layer of 1 inch and a second layer of 2 inch lumber.
- b) The site was prepared for the start of the walls and roof.
- c) The cupola was completed and ready to be hoisted into place when the tower was ready.



**14. September 2010 – The barn goes up!**

- a) Balsam trees (for roof rafters) were cut and debarked at Will Samis's farm. Rafters moved to Sowerby site.
- b) The walls, tower and cupola went up (with the help of Sterling Crane) – started on September 7<sup>th</sup> and rafters were on by September 19<sup>th</sup>.
- c) Work on the roof sheeting and barn board on the walls was completed.

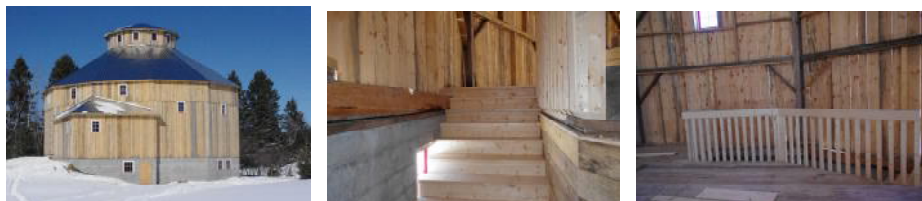


**15. October 2010 – Completion of roof, windows in cupola and big doors.**

- a) The metal roof was completed.
- b) 12 windows were installed in the cupola.
- c) The cart doors were built and installed with hinges from old barns. The smaller man door was finished, the lock will be finished next year.
- d) The lower windows and doors were sealed for the winter.
- e) Work stopped for this year on October 25<sup>th</sup> of 2010. The barn was ready for winter.



**Year 2011**





**16. March – work continues.**

- a) Windows are installed.
- b) The stairs and railings are built.
- c) Wood is placed over the concret block walls in the basement.
- d) The washrooms are framed in the basement.



**17. April - Finished flooring is ordered, installed in May, Hydro and water lines are installed.**



**18. June – Hydro panel is installed, Floor is sealed and French drain is added at lower door.**

**19. July – Last two windows are installed in upper floor and both main entrances are finished with the addition of a wooden walk way and barn bridge.**

