

1. The flood inundation limits shown on this map are estimated limits associated with modelling flows and water levels as found in the Hatch report titled "Huron Shores Floodplain Mapping Technical Report", Document Number H370886-0000-2B0-230-0001.
2. The method, procedures, and assumptions used to develop these limits were approximate and therefore these maps should only be used as guidance. Actual areas inundated will depend on actual flood hydrograph characteristics and may differ from the hydrograph characteristics adopted for this study.
3. This map is for illustrative purposes only. Information contained herein is not a substitute for professional review or site survey and is subject to change without notice. The District Municipality of Huron Shores and Hatch Ltd. take no responsibility for, nor guarantee, the accuracy of the information contained on this map. Any interpretation or conclusions drawn from this map are the sole responsibility of the user.
4. LiDAR (Light Detection and Ranging) survey data collected October 28th, 2021 by Tulloch.
5. Contains information used under the Open Government License - Ontario; Resources: Railway, Ontario Road Network, Buildings, Woodlands, Wetlands.

**LEGEND**

- Dam
- Watercourse
- Road
- Wooded Area
- Map Extent
- 50-Year Floodline
- Regulatory Floodline (100-Year Flood)
- Climate Change Proxy Floodway
- Climate Change Proxy Floodline



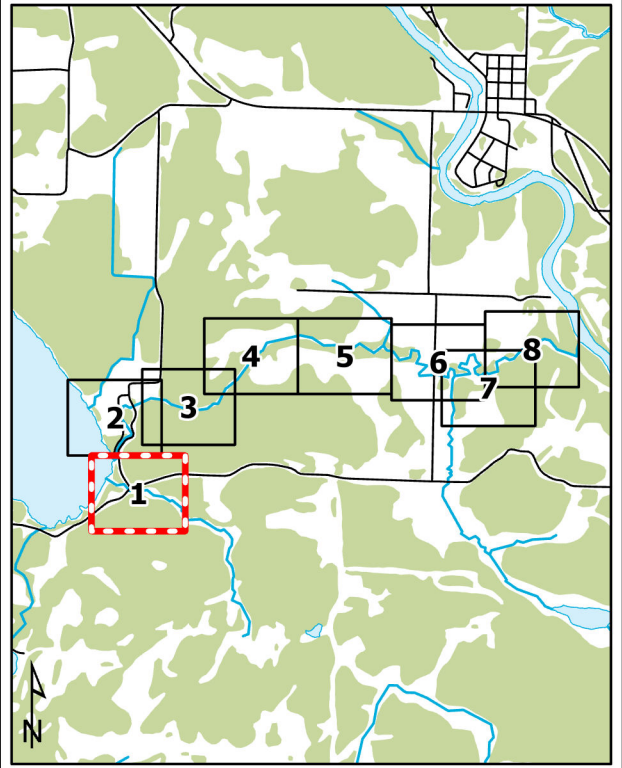
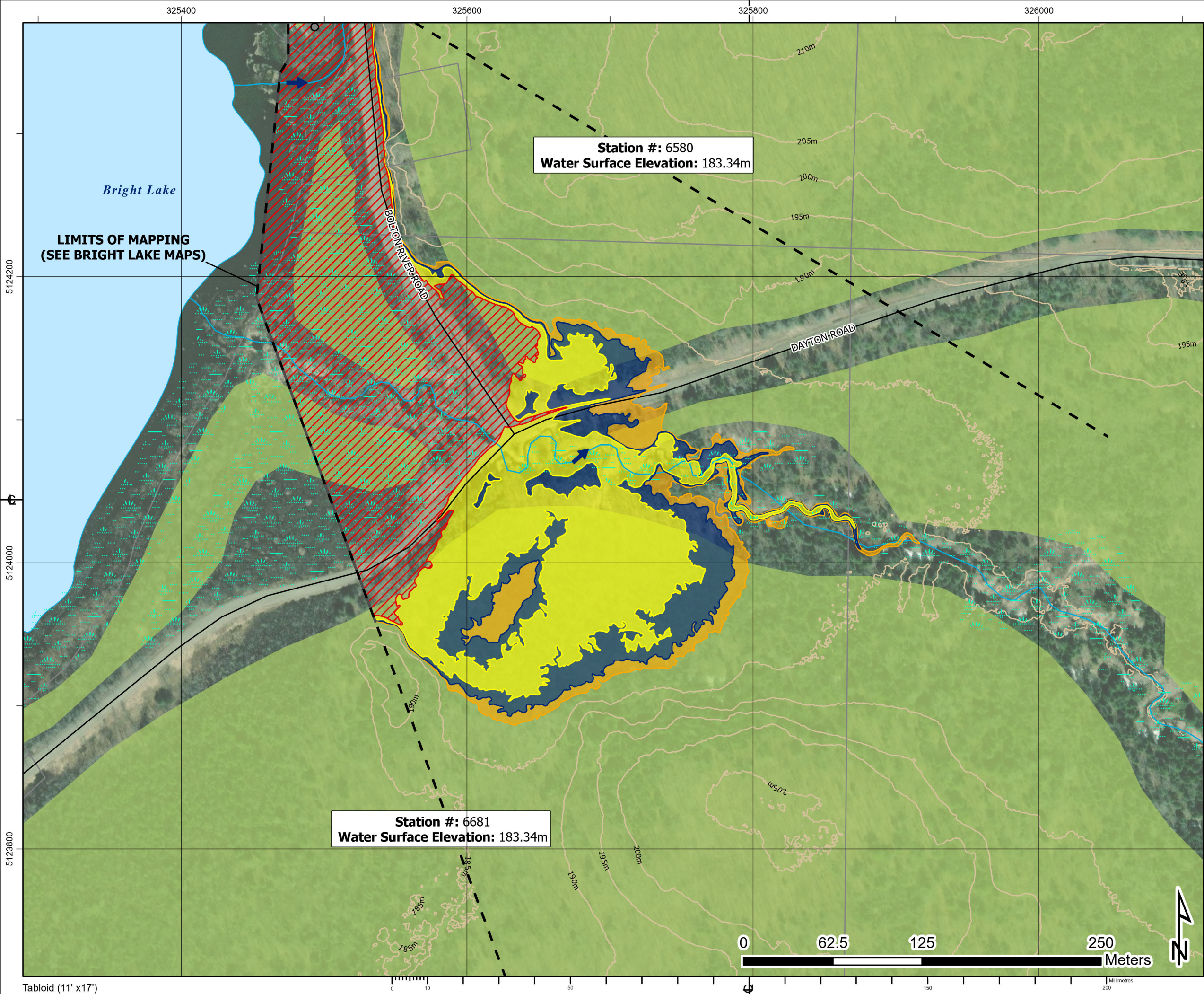
**BOLTON RIVER**

District Municipality of Huron Shores - Floodplain Mapping  
**Bolton River**  
**50-Year, Regulatory, and Climate Change Proxy Event**  
**Flood Inundation Map**



date - yr / month / day	projection	mapped by	checked by
2024/02/29	ZONE 17N	J. SNELGROVE	F. MASOOM
numerical scale	vertical datum	modeled by	model reviewed by
1:16,000	CGVD 2013	F. MASOOM	S. THAPA
horizontal datum	authorized by	service layer credits	
UTM NAD 1983 CSRS	S. THAPA	MAXAR	
report document no		sheet	rev
H370886-0000-2B0-230-0001		INDEX	0

**Approved for Use - 2024-02-29**



1. The flood inundation limits shown on this map are estimated limits associated with modelling flows and water levels as found in the Hatch report titled "Huron Shores Floodplain Mapping Technical Report", Document Number H370886-0000-2B0-230-0001.
2. The method, procedures, and assumptions used to develop these limits were approximate and therefore these maps should only be used as guidance. Actual areas inundated will depend on actual flood hydrograph characteristics and may differ from the hydrograph characteristics adopted for this study.
3. This map is for illustrative purposes only. Information contained herein is not a substitute for professional review or site survey and is subject to change without notice. The District Municipality of Huron Shores and Hatch Ltd. take no responsibility for, nor guarantee, the accuracy of the information contained on this map. Any interpretation or conclusions drawn from this map are the sole responsibility of the user.
4. LiDAR (Light Detection and Ranging) survey data collected October 28th, 2021 by Tulloch.
5. Contains information used under the Open Government License - Ontario; Resources: Railway, Ontario Road Network, Buildings, Woodlands, Wetlands.

**LEGEND**

Railway

Road

Contour (5m)

Building (As Symbol)

Building (To Scale)

Waterbody

Wetland

Wooded Area

Flow Direction

Dam

Climate Change Proxy Floodway

50-Year Floodline

Regulatory Floodline (100-Year Flood)

Climate Change Proxy Floodline

Cross Section (Climate Change Proxy Floodline Elevation)

**BOLTON RIVER**

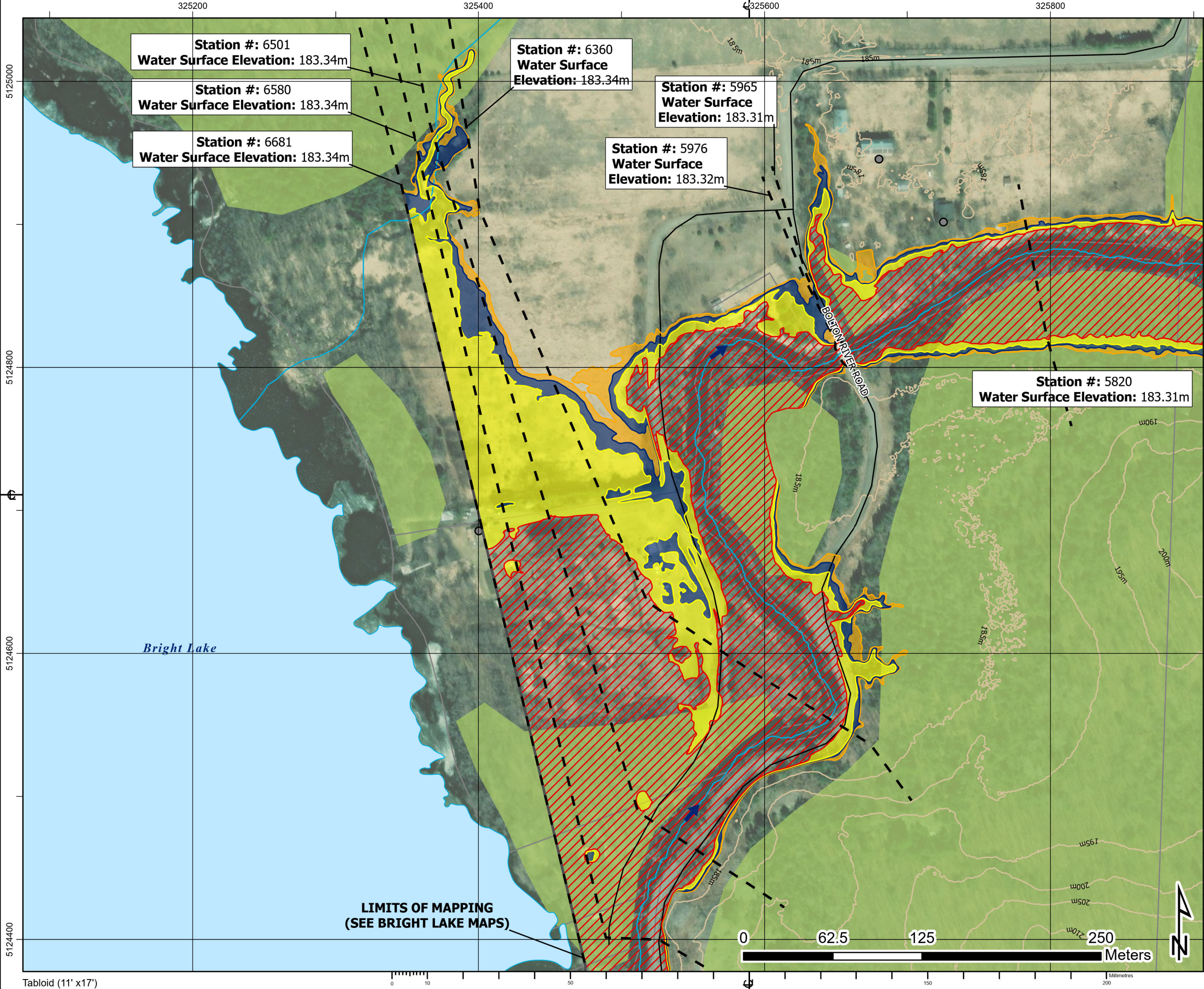
District Municipality of Huron Shores - Floodplain Mapping

**Bolton River**

**50-Year, Regulatory, and Climate Change Proxy Event**

**Flood Inundation Map**

date - yr / month / day	projection	mapped by	checked by
2024/02/29	ZONE 17N	J. SNELGROVE	F. MASOOM
numerical scale	vertical datum	modeled by	model reviewed by
1:2,500	CGVD 2013	F. MASOOM	S. THAPA
horizontal datum	authorized by	service layer credits	
UTM NAD 1983 CSRS	S. THAPA	MAXAR	
report document no			sheet
H370886-0000-2B0-230-0001			1 OF 8
			rev
			0



**Station #: 6501**  
**Water Surface Elevation: 183.34m**

**Station #: 6580**  
**Water Surface Elevation: 183.34m**

**Station #: 6681**  
**Water Surface Elevation: 183.34m**

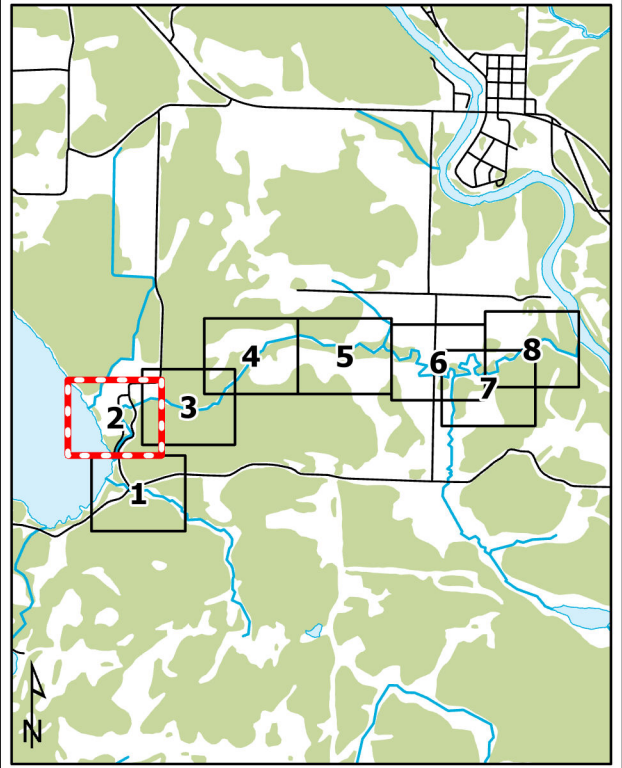
**Station #: 6360**  
**Water Surface Elevation: 183.34m**

**Station #: 5965**  
**Water Surface Elevation: 183.31m**

**Station #: 5976**  
**Water Surface Elevation: 183.32m**

**Station #: 5820**  
**Water Surface Elevation: 183.31m**

**LIMITS OF MAPPING**  
**(SEE BRIGHT LAKE MAPS)**



1. The flood inundation limits shown on this map are estimated limits associated with modelling flows and water levels as found in the Hatch report titled "Huron Shores Floodplain Mapping Technical Report", Document Number H370886-0000-2B0-230-0001.
2. The method, procedures, and assumptions used to develop these limits were approximate and therefore these maps should only be used as guidance. Actual areas inundated will depend on actual flood hydrograph characteristics and may differ from the hydrograph characteristics adopted for this study.
3. This map is for illustrative purposes only. Information contained herein is not a substitute for professional review or site survey and is subject to change without notice. The District Municipality of Huron Shores and Hatch Ltd. take no responsibility for, nor guarantee, the accuracy of the information contained on this map. Any interpretation or conclusions drawn from this map are the sole responsibility of the user.
4. LiDAR (Light Detection and Ranging) survey data collected October 28th, 2021 by Tulloch.
5. Contains information used under the Open Government License - Ontario; Resources: Railway, Ontario Road Network, Buildings, Woodlands, Wetlands.

**LEGEND**

Railway

Road

Contour (5m)

Building (As Symbol)

Building (To Scale)

Waterbody

Wetland

Wooded Area

Flow Direction

Dam

Climate Change Proxy Floodway

50-Year Floodline

Regulatory Floodline (100-Year Flood)

Climate Change Proxy Floodline

Cross Section (Climate Change Proxy Floodline Elevation)

**BOLTON RIVER**

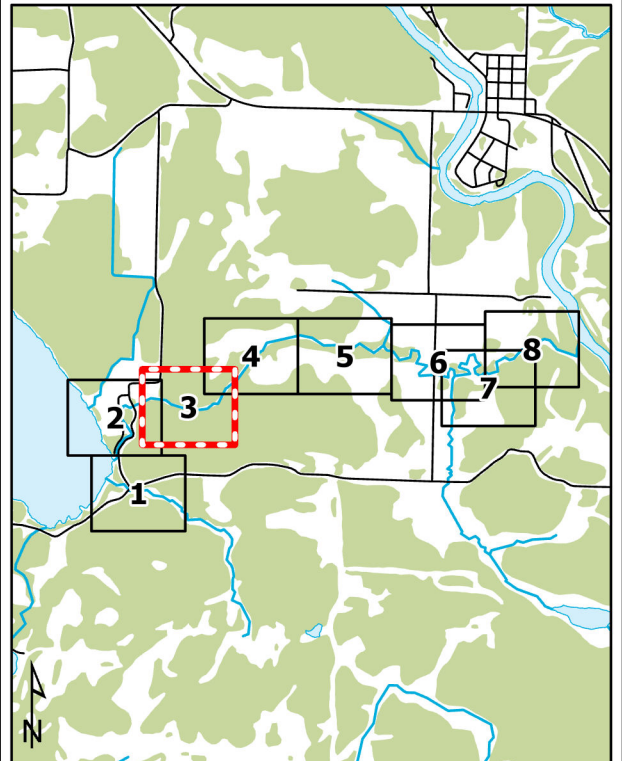
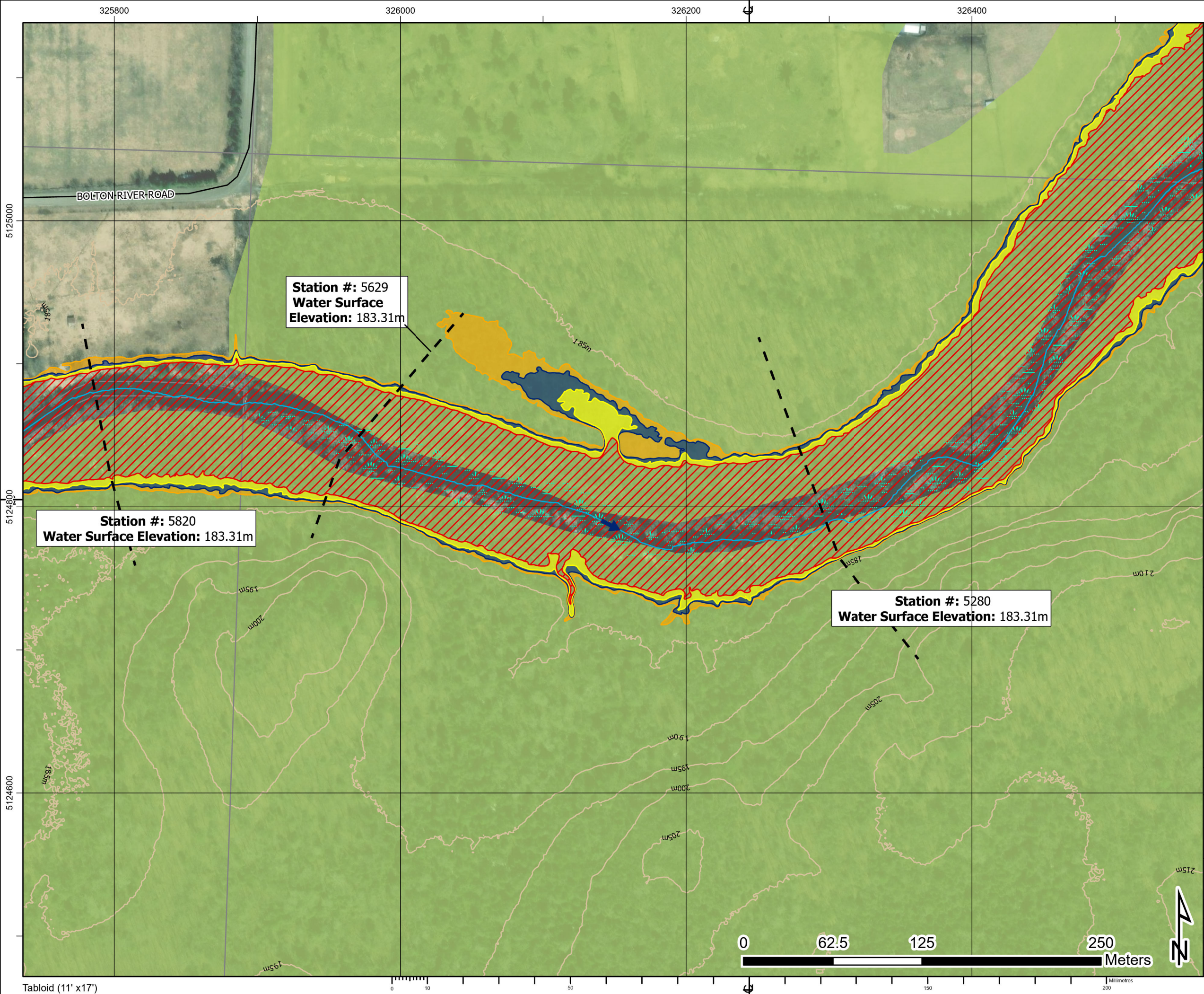
District Municipality of Huron Shores - Floodplain Mapping

**Bolton River**

**50-Year, Regulatory, and Climate Change Proxy Event**

**Flood Inundation Map**

date - yr / month / day	projection	mapped by	checked by
2024/02/29	ZONE 17N	J. SNELGROVE	F. MASOOM
numerical scale	vertical datum	modeled by	model reviewed by
1:2,500	CGVD 2013	F. MASOOM	S. THAPA
horizontal datum	authorized by	service layer credits	
UTM NAD 1983 CSRS	S. THAPA	MAXAR, MICROSOFT	
report document no	sheet		rev
H370886-0000-2B0-230-0001	2 OF 8		0



1. The flood inundation limits shown on this map are estimated limits associated with modelling flows and water levels as found in the Hatch report titled "Huron Shores Floodplain Mapping Technical Report", Document Number H370886-0000-2B0-230-0001.
2. The method, procedures, and assumptions used to develop these limits were approximate and therefore these maps should only be used as guidance. Actual areas inundated will depend on actual flood hydrograph characteristics and may differ from the hydrograph characteristics adopted for this study.
3. This map is for illustrative purposes only. Information contained herein is not a substitute for professional review or site survey and is subject to change without notice. The District Municipality of Huron Shores and Hatch Ltd. take no responsibility for, nor guarantee, the accuracy of the information contained on this map. Any interpretation or conclusions drawn from this map are the sole responsibility of the user.
4. LiDAR (Light Detection and Ranging) survey data collected October 28th, 2021 by Tulloch.
5. Contains information used under the Open Government License - Ontario; Resources: Railway, Ontario Road Network, Buildings, Woodlands, Wetlands.

**LEGEND**

—+— Railway	➔ Flow Direction
— Road	■ Dam
— Contour (5m)	▨ Climate Change Proxy Floodway
● Building (As Symbol)	■ 50-Year Floodline
■ Building (To Scale)	■ Regulatory Floodline (100-Year Flood)
■ Waterbody	■ Climate Change Proxy Floodline
■ Wetland	— Cross Section (Climate Change Proxy Floodline Elevation)
■ Wooded Area	

**BOLTON RIVER**

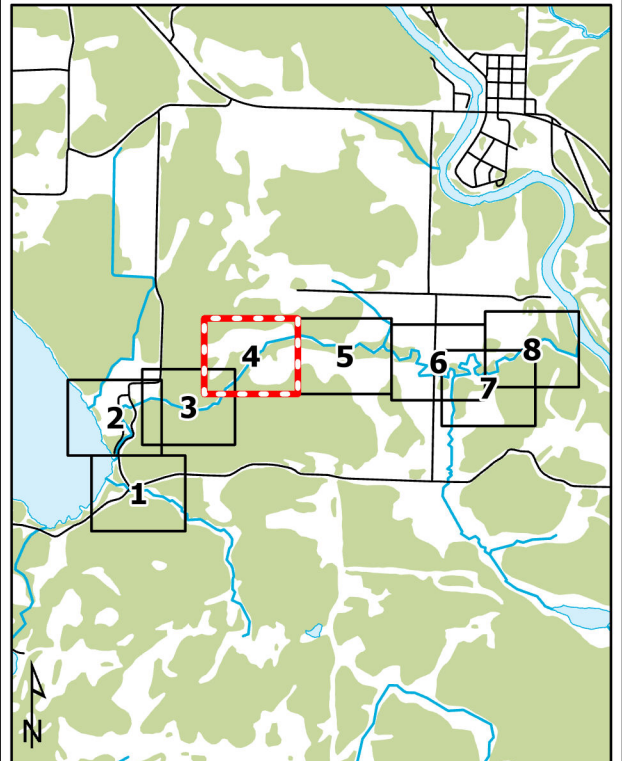
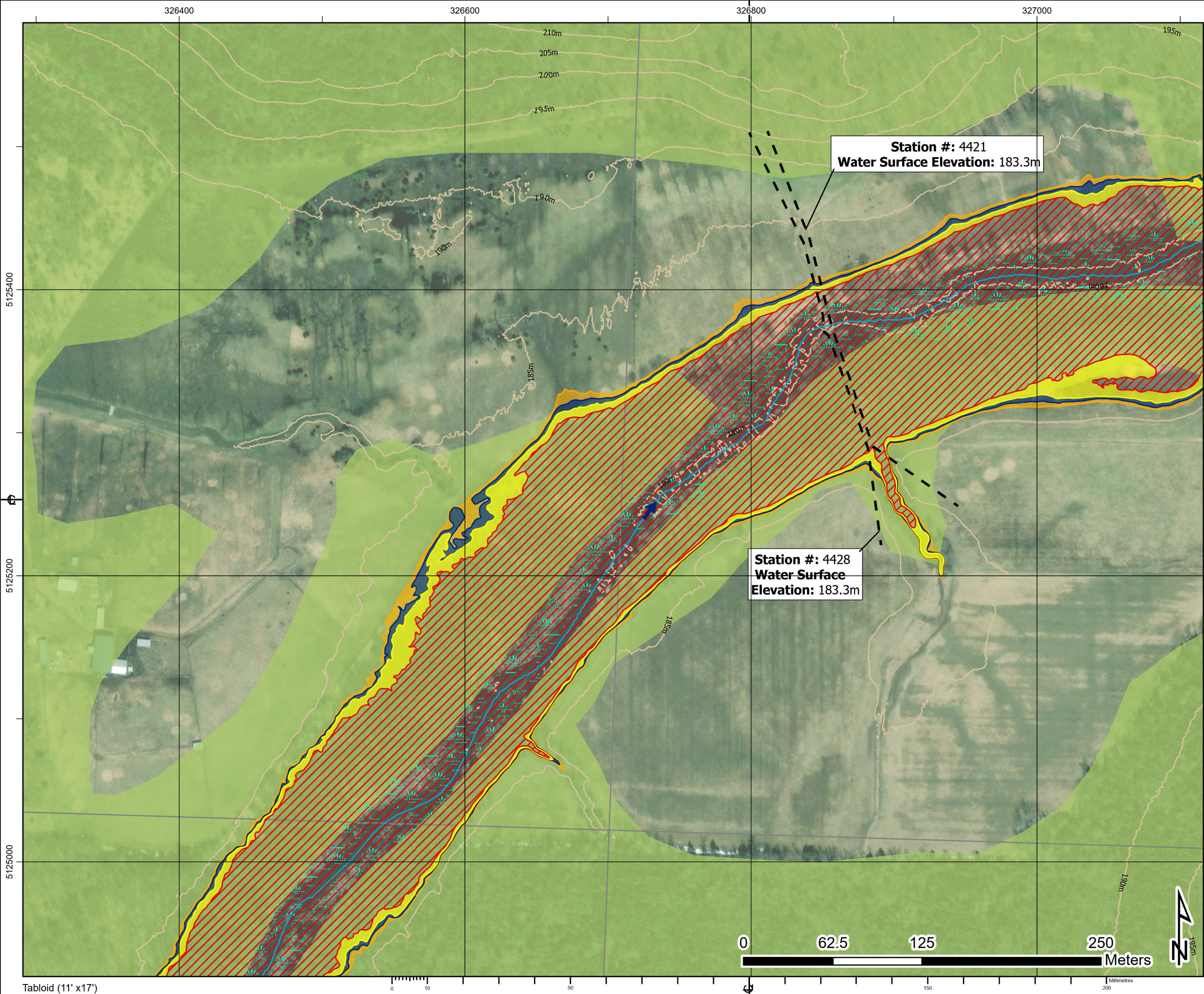
District Municipality of Huron Shores - Floodplain Mapping

**Bolton River**

**50-Year, Regulatory, and Climate Change Proxy Event Flood Inundation Map**

<b>HATCH</b>			
date - yr / month / day	projection	mapped by	checked by
2024/02/29	ZONE 17N	J. SNELGROVE	F. MASOOM
numerical scale	vertical datum	modeled by	model reviewed by
1:2,500	CGVD 2013	F. MASOOM	S. THAPA
horizontal datum	authorized by	service layer credits	
UTM NAD 1983 CSRS	S. THAPA	MAXAR, MICROSOFT	
report document no	sheet	rev	
H370886-0000-2B0-230-0001	3 OF 8	0	

Approved for Use - 2024-02-29



1. The flood inundation limits shown on this map are estimated limits associated with modelling flows and water levels as found in the Hatch report titled "Huron Shores Floodplain Mapping Technical Report", Document Number H370886-0000-2B0-230-0001.
2. The method, procedures, and assumptions used to develop these limits were approximate and therefore these maps should only be used as guidance. Actual areas inundated will depend on actual flood hydrograph characteristics and may differ from the hydrograph characteristics adopted for this study.
3. This map is for illustrative purposes only. Information contained herein is not a substitute for professional review or site survey and is subject to change without notice. The District Municipality of Huron Shores and Hatch Ltd. take no responsibility for, nor guarantee, the accuracy of the information contained on this map. Any interpretation or conclusions drawn from this map are the sole responsibility of the user.
4. LiDAR (Light Detection and Ranging) survey data collected October 28th, 2021 by Tulloch.
5. Contains information used under the Open Government License - Ontario; Resources: Railway, Ontario Road Network, Buildings, Woodlands, Wetlands.

**LEGEND**

Railway

Road

Contour (5m)

Building (As Symbol)

Building (To Scale)

Waterbody

Wetland

Wooded Area

Flow Direction

Dam

Climate Change Proxy Floodway

50-Year Floodline

Regulatory Floodline (100-Year Flood)

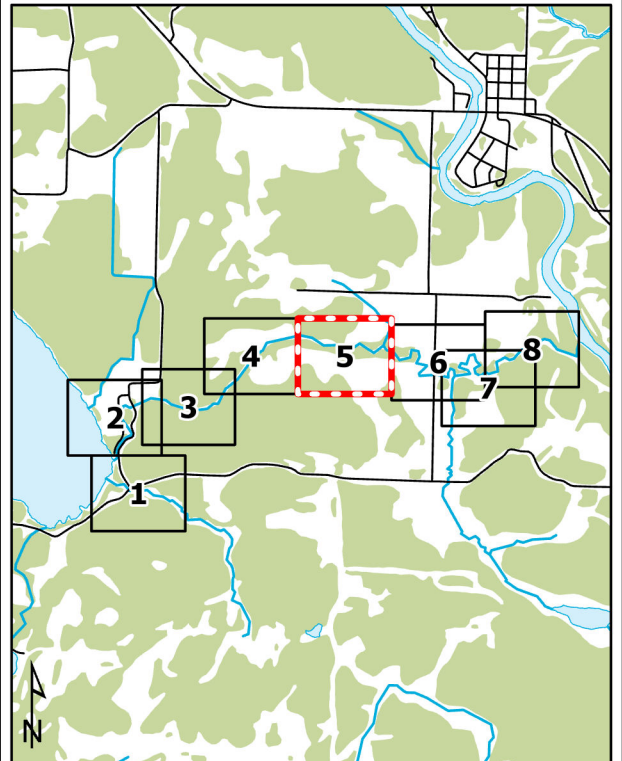
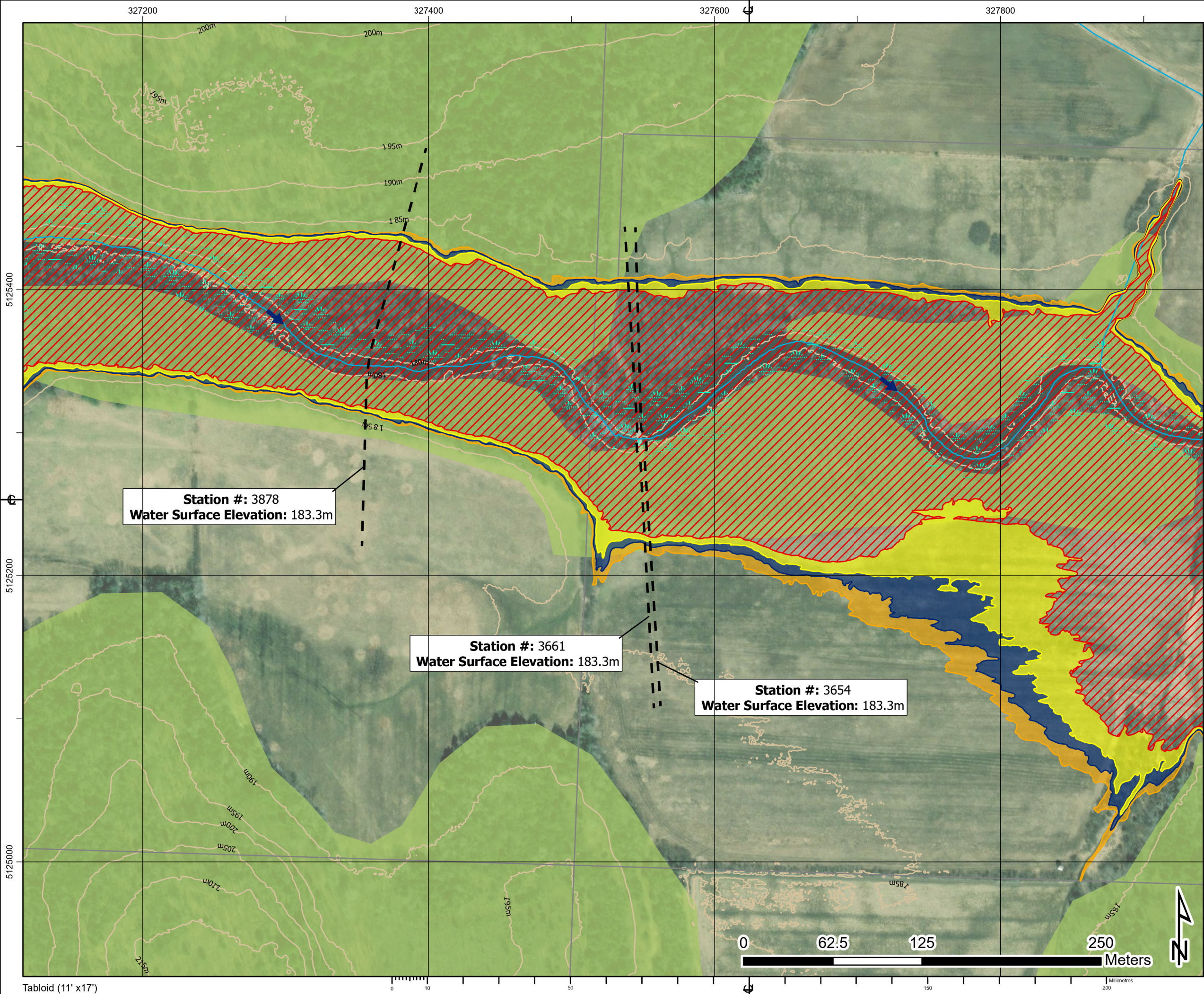
Climate Change Proxy Floodline

Cross Section (Climate Change Proxy Floodline Elevation)

**BOLTON RIVER**

District Municipality of Huron Shores - Floodplain Mapping  
**Bolton River**  
50-Year, Regulatory, and Climate Change Proxy Event  
Flood Inundation Map

date - yr / month / day	projection	mapped by	checked by
2024/02/29	ZONE 17N	J. SNELGROVE	F. MASOOM
numerical scale	vertical datum	modeled by	model reviewed by
1:2,500	CGVD 2013	F. MASOOM	S. THAPA
horizontal datum	authorized by	service layer credits	
UTM NAD 1983 CSRS	S. THAPA	MAXAR	
report document no		sheet	rev
H370886-0000-2B0-230-0001		4 OF 8	0



1. The flood inundation limits shown on this map are estimated limits associated with modelling flows and water levels as found in the Hatch report titled "Huron Shores Floodplain Mapping Technical Report", Document Number H370886-0000-2B0-230-0001.
2. The method, procedures, and assumptions used to develop these limits were approximate and therefore these maps should only be used as guidance. Actual areas inundated will depend on actual flood hydrograph characteristics and may differ from the hydrograph characteristics adopted for this study.
3. This map is for illustrative purposes only. Information contained herein is not a substitute for professional review or site survey and is subject to change without notice. The District Municipality of Huron Shores and Hatch Ltd. take no responsibility for, nor guarantee, the accuracy of the information contained on this map. Any interpretation or conclusions drawn from this map are the sole responsibility of the user.
4. LiDAR (Light Detection and Ranging) survey data collected October 28th, 2021 by Tulloch.
5. Contains information used under the Open Government License - Ontario; Resources: Railway, Ontario Road Network, Buildings, Woodlands, Wetlands.

**LEGEND**

Railway

Road

Contour (5m)

Building (As Symbol)

Building (To Scale)

Waterbody

Wetland

Wooded Area

Flow Direction

Dam

Climate Change Proxy Floodway

50-Year Floodline

Regulatory Floodline (100-Year Flood)

Climate Change Proxy Floodline

Cross Section (Climate Change Proxy Floodline Elevation)

**BOLTON RIVER**

District Municipality of Huron Shores - Floodplain Mapping

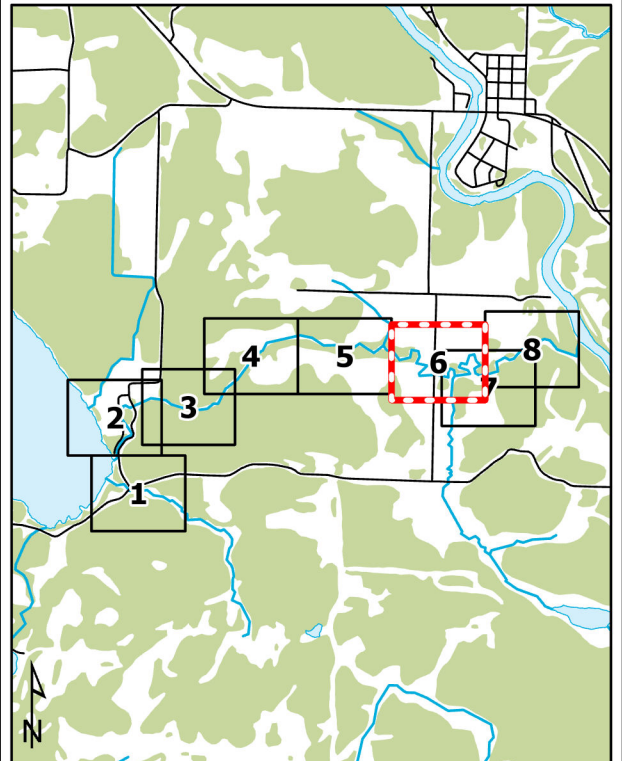
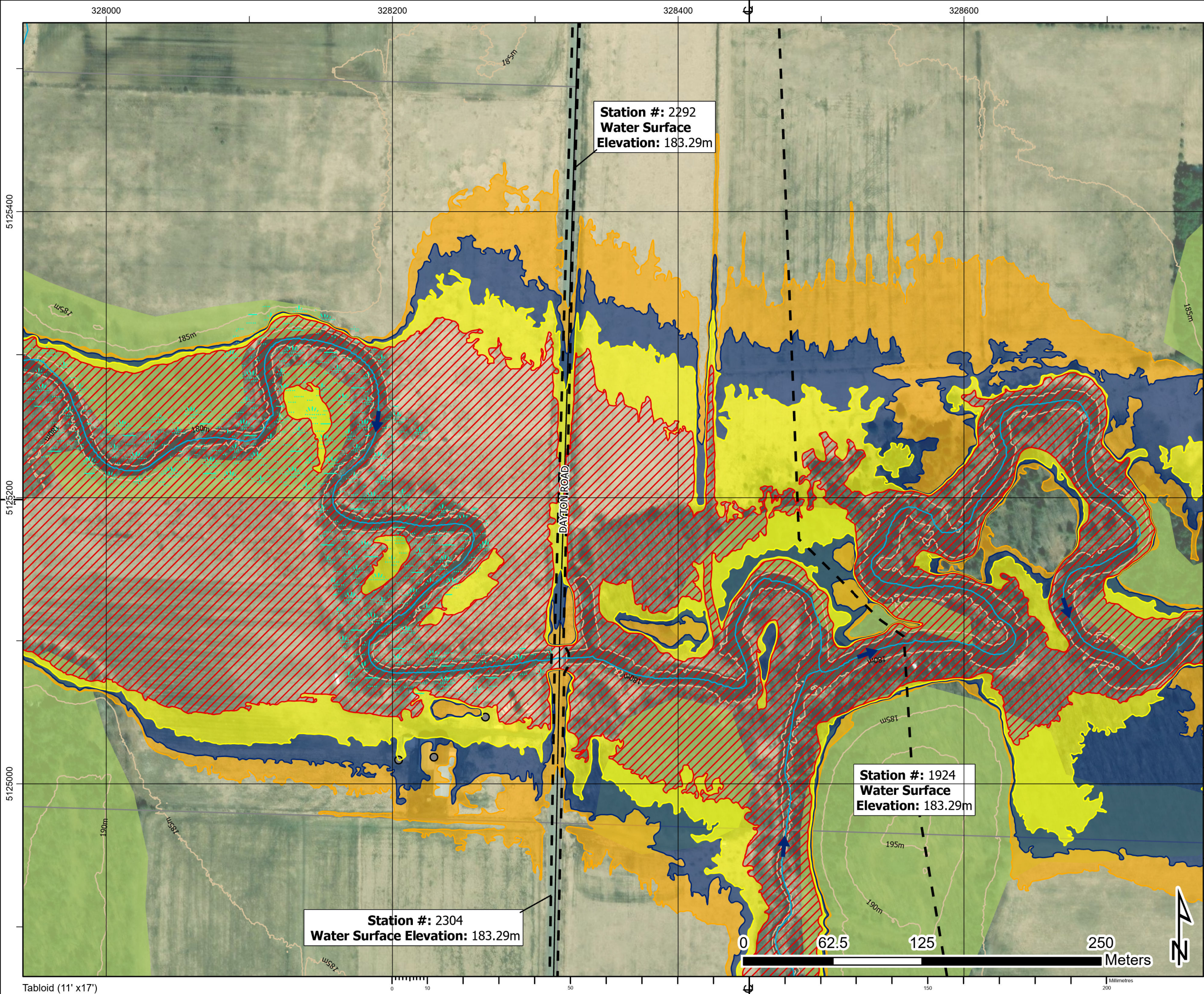
**Bolton River**

**50-Year, Regulatory, and Climate Change Proxy Event**

**Flood Inundation Map**

<b>HATCH</b>			
date - yr / month / day	projection	mapped by	checked by
2024/02/29	ZONE 17N	J. SNELGROVE	F. MASOOM
numerical scale	vertical datum	modeled by	model reviewed by
1:2,500	CGVD 2013	F. MASOOM	S. THAPA
horizontal datum	authorized by	service layer credits	
UTM NAD 1983 CSRS	S. THAPA	MAXAR	
report document no		sheet	rev
H370886-0000-2B0-230-0001		5 OF 8	0

Approved for Use - 2024-02-29



1. The flood inundation limits shown on this map are estimated limits associated with modelling flows and water levels as found in the Hatch report titled "Huron Shores Floodplain Mapping Technical Report", Document Number H370886-0000-2B0-230-0001.
2. The method, procedures, and assumptions used to develop these limits were approximate and therefore these maps should only be used as guidance. Actual areas inundated will depend on actual flood hydrograph characteristics and may differ from the hydrograph characteristics adopted for this study.
3. This map is for illustrative purposes only. Information contained herein is not a substitute for professional review or site survey and is subject to change without notice. The District Municipality of Huron Shores and Hatch Ltd. take no responsibility for, nor guarantee, the accuracy of the information contained on this map. Any interpretation or conclusions drawn from this map are the sole responsibility of the user.
4. LiDAR (Light Detection and Ranging) survey data collected October 28th, 2021 by Tulloch.
5. Contains information used under the Open Government License - Ontario; Resources: Railway, Ontario Road Network, Buildings, Woodlands, Wetlands.

**LEGEND**

—+— Railway	→ Flow Direction
— Road	■ Dam
— Contour (5m)	▨ Climate Change Proxy Floodway
● Building (As Symbol)	■ 50-Year Floodline
■ Building (To Scale)	■ Regulatory Floodline (100-Year Flood)
■ Waterbody	■ Climate Change Proxy Floodline
■ Wetland	— Cross Section (Climate Change Proxy Floodline Elevation)
■ Wooded Area	

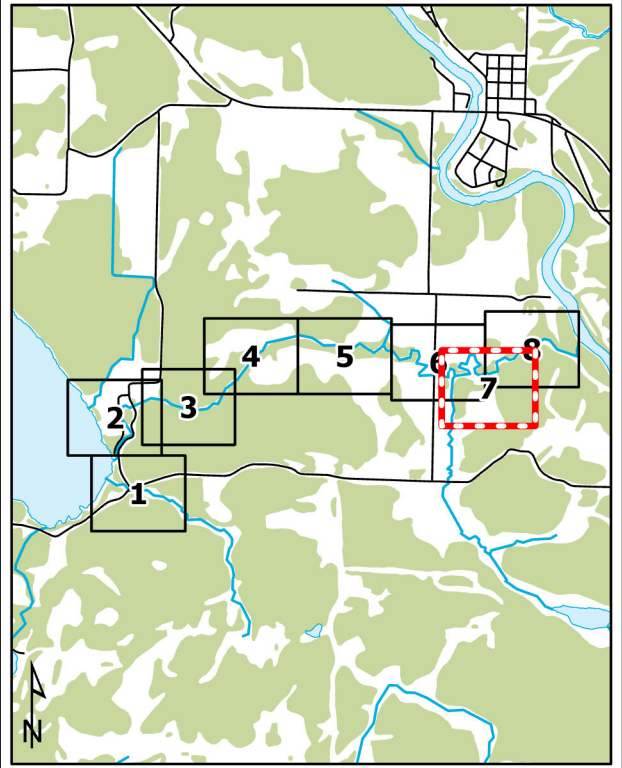
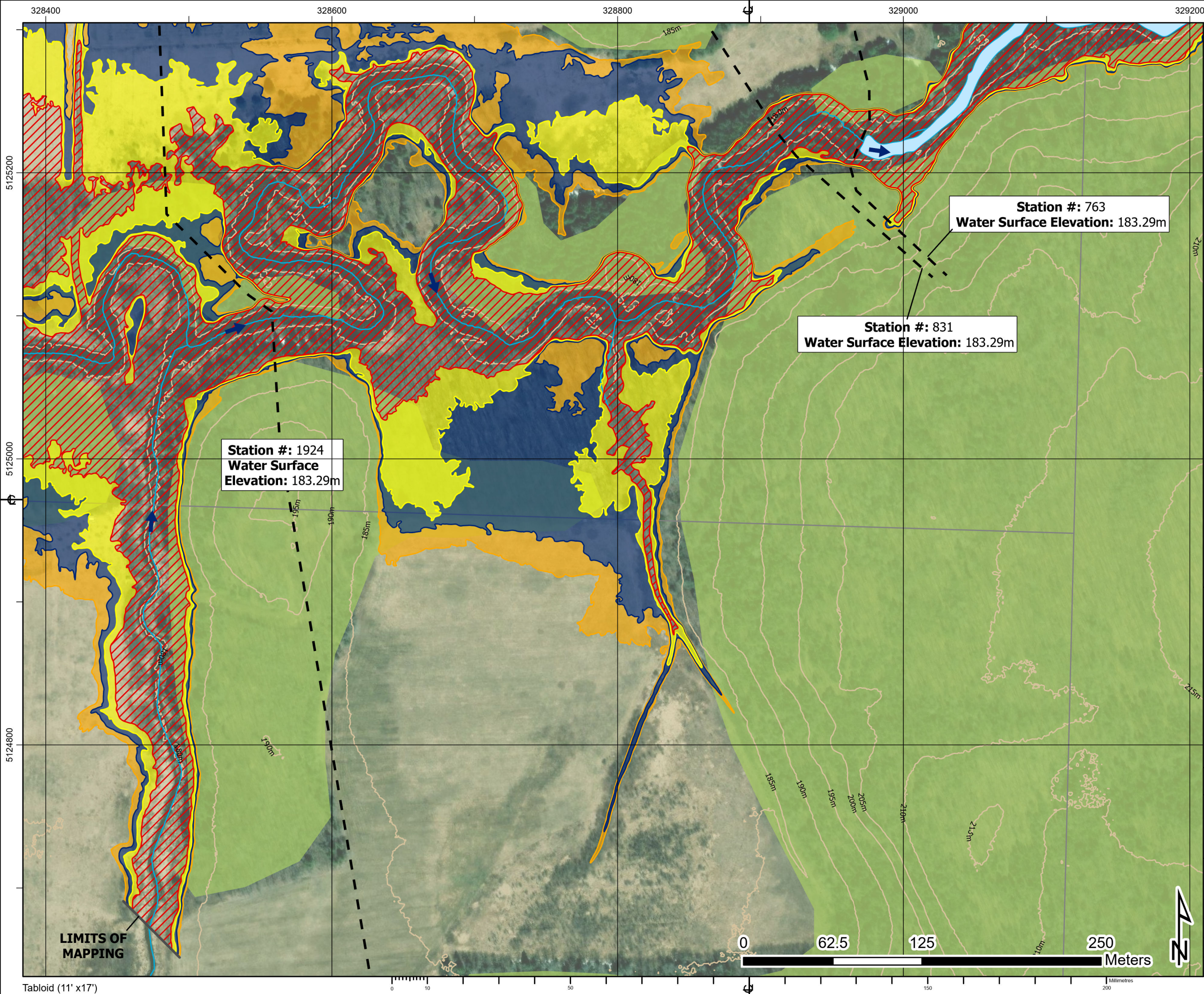
**BOLTON RIVER**

District Municipality of Huron Shores - Floodplain Mapping

**Bolton River**

**50-Year, Regulatory, and Climate Change Proxy Event Flood Inundation Map**

<b>HATCH</b>			
date - yr / month / day	projection	mapped by	checked by
2024/02/29	ZONE 17N	J. SNELGROVE	F. MASOOM
numerical scale	vertical datum	modeled by	model reviewed by
1:2,500	CGVD 2013	F. MASOOM	S. THAPA
horizontal datum	authorized by	service layer credits	
UTM NAD 1983 CSRS	S. THAPA	MAXAR	
report document no		sheet	rev
H370886-0000-2B0-230-0001		6 OF 8	0



1. The flood inundation limits shown on this map are estimated limits associated with modelling flows and water levels as found in the Hatch report titled "Huron Shores Floodplain Mapping Technical Report", Document Number H370886-0000-2B0-230-0001.
2. The method, procedures, and assumptions used to develop these limits were approximate and therefore these maps should only be used as guidance. Actual areas inundated will depend on actual flood hydrograph characteristics and may differ from the hydrograph characteristics adopted for this study.
3. This map is for illustrative purposes only. Information contained herein is not a substitute for professional review or site survey and is subject to change without notice. The District Municipality of Huron Shores and Hatch Ltd. take no responsibility for, nor guarantee, the accuracy of the information contained on this map. Any interpretation or conclusions drawn from this map are the sole responsibility of the user.
4. LiDAR (Light Detection and Ranging) survey data collected October 28th, 2021 by Tulloch.
5. Contains information used under the Open Government License - Ontario; Resources: Railway, Ontario Road Network, Buildings, Woodlands, Wetlands.

**LEGEND**

Railway

Road

Contour (5m)

Building (As Symbol)

Building (To Scale)

Waterbody

Wetland

Wooded Area

Flow Direction

Dam

Climate Change Proxy Floodway

50-Year Floodline

Regulatory Floodline (100-Year Flood)

Climate Change Proxy Floodline

Cross Section (Climate Change Proxy Floodline Elevation)

**BOLTON RIVER**

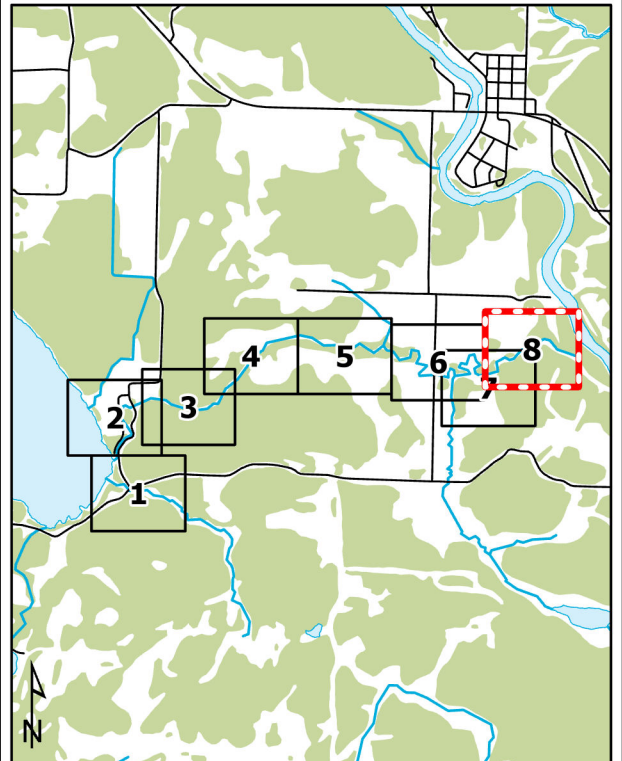
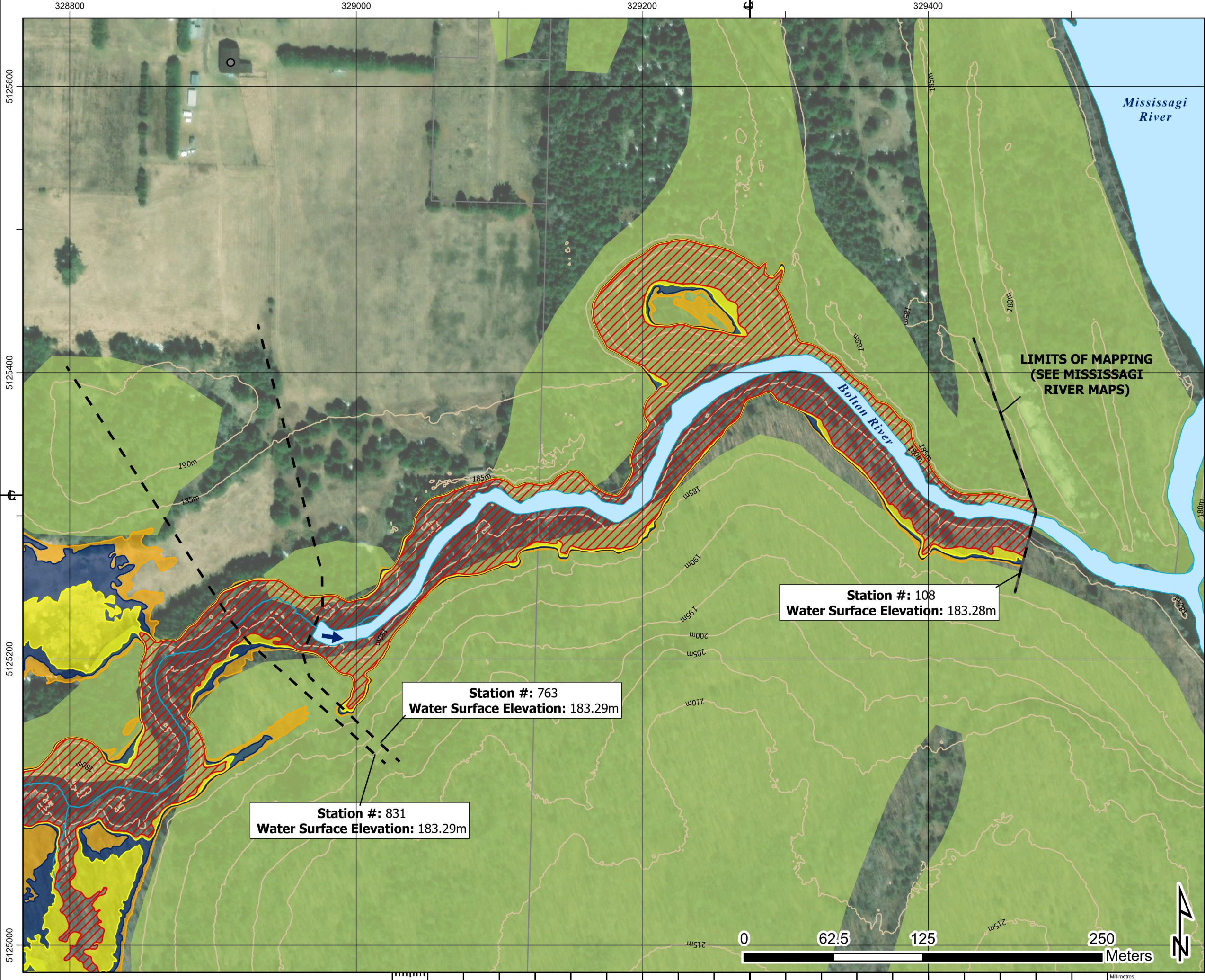
District Municipality of Huron Shores - Floodplain Mapping

**Bolton River**

**50-Year, Regulatory, and Climate Change Proxy Event**

**Flood Inundation Map**

date - yr / month / day	projection	mapped by	checked by
2024/02/29	ZONE 17N	J. SNELGROVE	F. MASOOM
numerical scale	vertical datum	modeled by	model reviewed by
1:2,500	CGVD 2013	F. MASOOM	S. THAPA
horizontal datum	authorized by	service layer credits	
UTM NAD 1983 CSRS	S. THAPA	MAXAR, MICROSOFT	
report document no		sheet	rev
H370886-0000-2B0-230-0001		7 OF 8	0



1. The flood inundation limits shown on this map are estimated limits associated with modelling flows and water levels as found in the Hatch report titled "Huron Shores Floodplain Mapping Technical Report", Document Number H370886-0000-2B0-230-0001.
2. The method, procedures, and assumptions used to develop these limits were approximate and therefore these maps should only be used as guidance. Actual areas inundated will depend on actual flood hydrograph characteristics and may differ from the hydrograph characteristics adopted for this study.
3. This map is for illustrative purposes only. Information contained herein is not a substitute for professional review or site survey and is subject to change without notice. The District Municipality of Huron Shores and Hatch Ltd. take no responsibility for, nor guarantee, the accuracy of the information contained on this map. Any interpretation or conclusions drawn from this map are the sole responsibility of the user.
4. LiDAR (Light Detection and Ranging) survey data collected October 28th, 2021 by Tulloch.
5. Contains information used under the Open Government License - Ontario; Resources: Railway, Ontario Road Network, Buildings, Woodlands, Wetlands.

**LEGEND**

Railway

 Road

 Contour (5m)

**BOLTON RIVER**

District Municipality of Huron Shores - Floodplain Mapping

**Bolton River**

**50-Year, Regulatory, and Climate Change Proxy Event Flood Inundation Map**

date - yr / month / day	projection	mapped by	checked by
2024/02/29	ZONE 17N	J. SNELGROVE	F. MASOOM
numerical scale	vertical datum	modeled by	model reviewed by
1:2,500	CGVD 2013	F. MASOOM	S. THAPA
horizontal datum	authorized by	service layer credits	
UTM NAD 1983 CSRS	S. THAPA	MAXAR	
report document no			sheet
H370886-0000-2B0-230-0001			8 OF 8
			rev
			0

Approved for Use - 2024-02-29