

1. The flood inundation limits shown on this map are estimated limits associated with modelling flows and water levels as found in the Hatch report titled "Huron Shores Floodplain Mapping Technical Report", Document Number H370886-0000-2B0-230-0001.
2. The method, procedures, and assumptions used to develop these limits were approximate and therefore these maps should only be used as guidance. Actual areas inundated will depend on actual flood hydrograph characteristics and may differ from the hydrograph characteristics adopted for this study.
3. This map is for illustrative purposes only. Information contained herein is not a substitute for professional review or site survey and is subject to change without notice. The District Municipality of Huron Shores and Hatch Ltd. take no responsibility for, nor guarantee, the accuracy of the information contained on this map. Any interpretation or conclusions drawn from this map are the sole responsibility of the user.
4. LiDAR (Light Detection and Ranging) survey data collected October 28th, 2021 by Tulloch.
5. Contains information used under the Open Government License - Ontario; Resources: Railway, Ontario Road Network, Buildings, Woodlands, Wetlands.

LEGEND

- Dam
- Watercourse
- Road
- Wooded Area
- Map Extent
- 50-Year Floodline
- Regulatory Floodline (100-Year Flood)
- Climate Change Proxy Floodway
- Climate Change Proxy Floodline



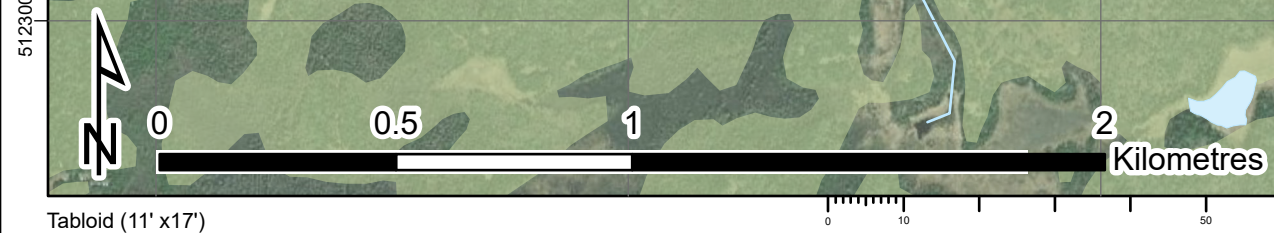
BOLTON RIVER

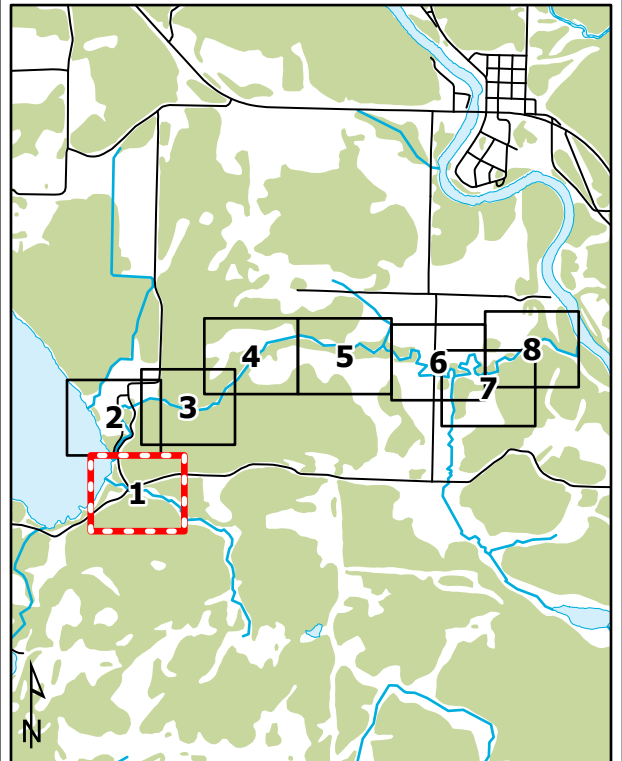
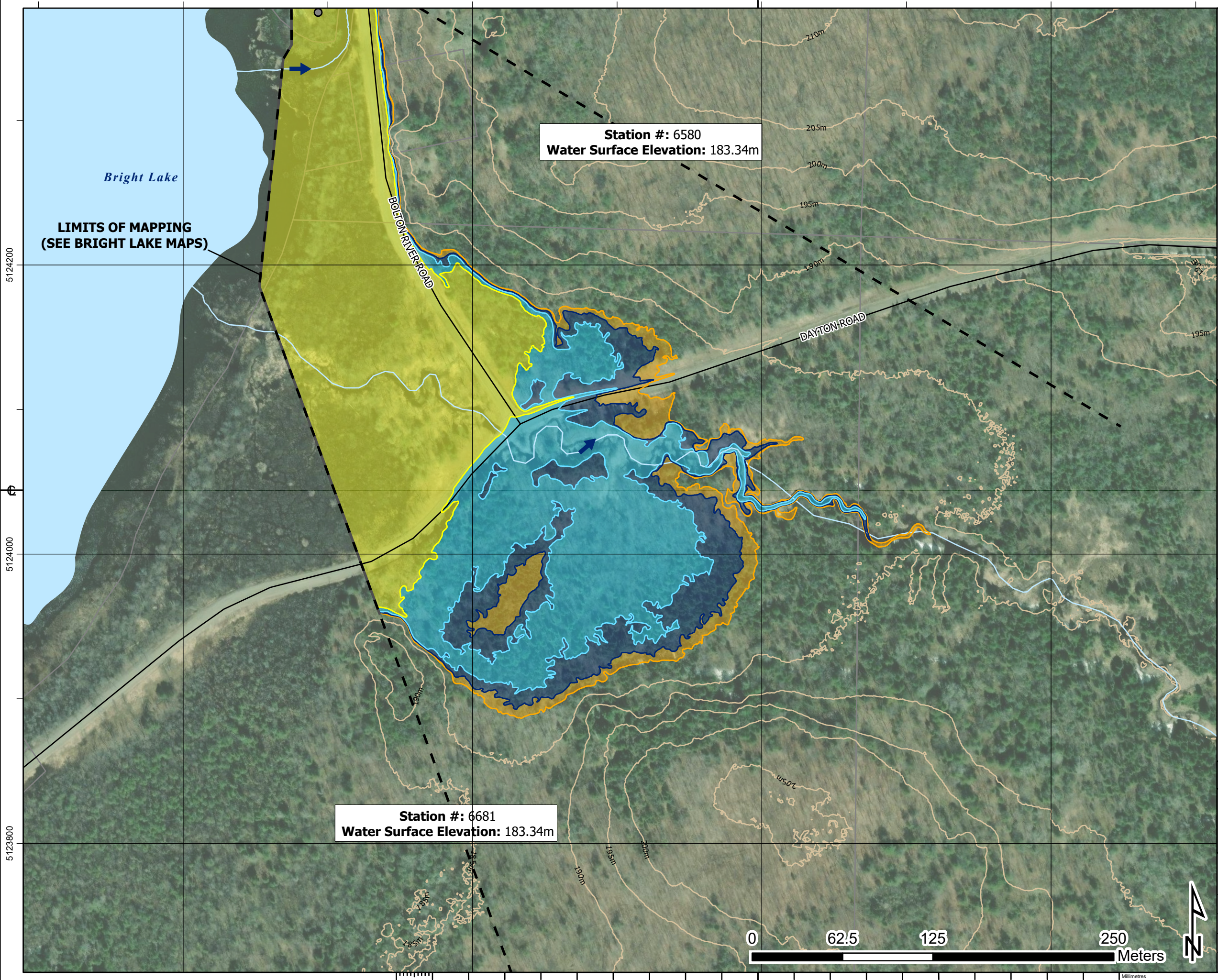
District Municipality of Huron Shores - Floodplain Mapping
Bolton River
50-Year, Regulatory, and Climate Change Proxy Event
Flood Inundation Map



| | | | |
|---|-----------------------------|--------------------------------|-------------------------------|
| date - yr / month / day 2024/04/30 | projection ZONE 17N | mapped by J. SNELGROVE | checked by F. MASOOM |
| numerical scale 1:16,000 | vertical datum CGVD 2013 | modeled by F. MASOOM | model reviewed by S. THAPA |
| horizontal datum UTM NAD 1983 CSRS | authorized by S. THAPA | service layer credits MAXAR | |
| report document no H370886-0000-2B0-230-0001 | sheet INDEX | rev 1 | |

Approved for Use - 2024-05-03





1. The flood inundation limits shown on this map are estimated limits associated with modelling flows and water levels as found in the Hatch report titled "Huron Shores Floodplain Mapping Technical Report", Document Number H370886-0000-2B0-230-0001.
2. The method, procedures, and assumptions used to develop these limits were approximate and therefore these maps should only be used as guidance. Actual areas inundated will depend on actual flood hydrograph characteristics and may differ from the hydrograph characteristics adopted for this study.
3. This map is for illustrative purposes only. Information contained herein is not a substitute for professional review or site survey and is subject to change without notice. The District Municipality of Huron Shores and Hatch Ltd. take no responsibility for, nor guarantee, the accuracy of the information contained on this map. Any interpretation or conclusions drawn from this map are the sole responsibility of the user.
4. LiDAR (Light Detection and Ranging) survey data collected October 28th, 2021 by Tulloch.
5. Contains information used under the Open Government License - Ontario; Resources: Railway, Ontario Road Network, Buildings, Woodlands, Wetlands.

LEGEND

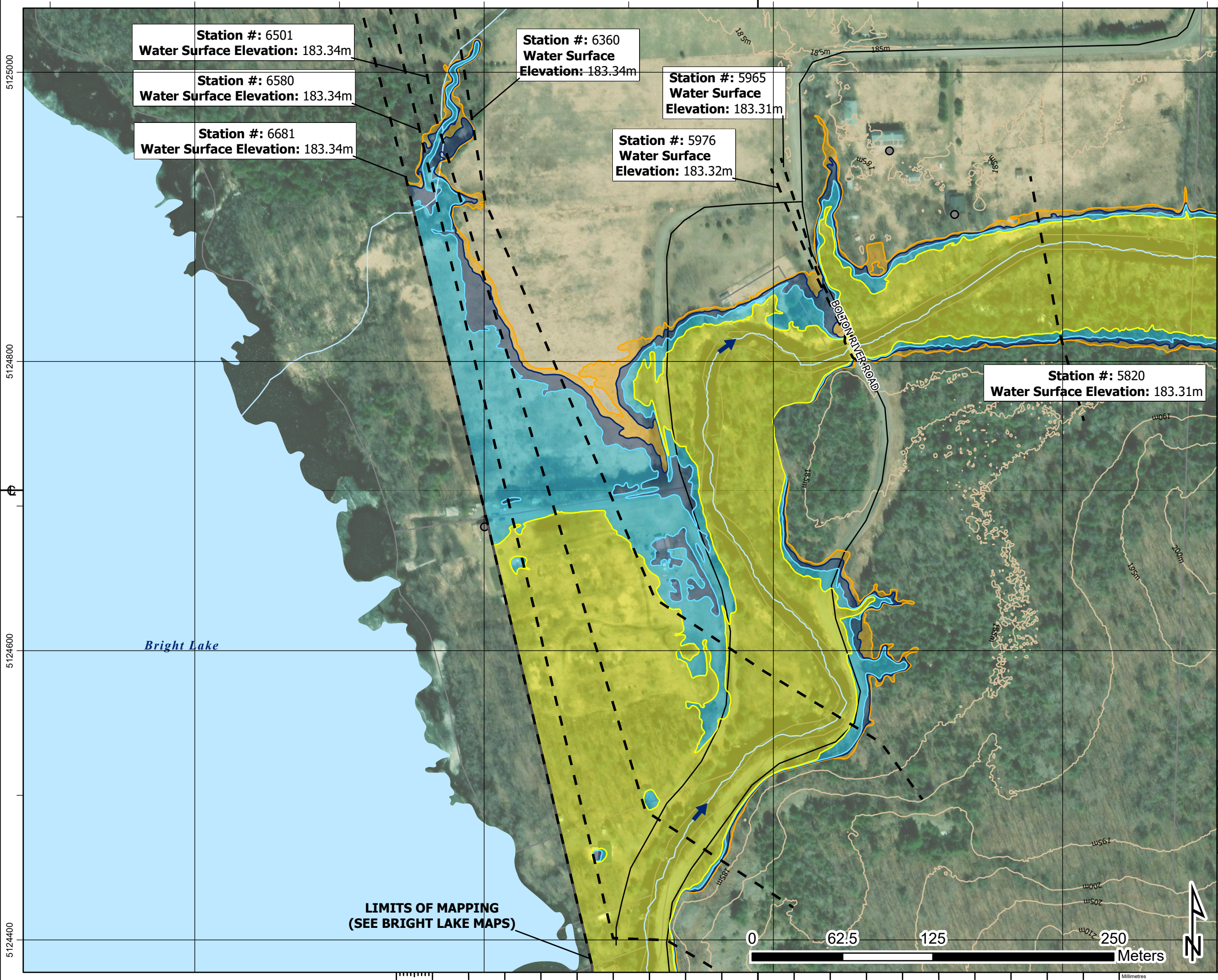
| | | |
|------------------------|--------------------------------|--|
| —+— Railway | | Flow Direction |
| — Road | Dam | Climate Change Proxy Floodway |
| — Contour (5m) | 50-Year Floodline | Regulatory Floodline (100-Year Flood) |
| ● Building (As Symbol) | Climate Change Proxy Floodline | Cross Section (Climate Change Proxy Floodline Elevation) |
| ■ Building (To Scale) | | |
| □ Parcel Boundary | | |
| ■ Waterbody | | |

BOLTON RIVER

District Municipality of Huron Shores - Floodplain Mapping
Bolton River
50-Year, Regulatory, and Climate Change Proxy Event
Flood Inundation Map

| | | | |
|---|-----------------------------|---|-------------------------------|
| | | | |
| date - yr / month / day 2024/04/30 | projection ZONE 17N | mapped by J. SNELGROVE | checked by F. MASOOM |
| numerical scale 1:2,500 | vertical datum CGVD 2013 | modeled by F. MASOOM | model reviewed by S. THAPA |
| horizontal datum UTM NAD 1983 CSRS | authorized by S. THAPA | service layer credits MAXAR, MICROSOFT | |
| report document no H370886-0000-2B0-230-0001 | sheet 1 OF 8 | rev 1 | |





Station #: 6501
Water Surface Elevation: 183.34m

Station #: 6580
Water Surface Elevation: 183.34m

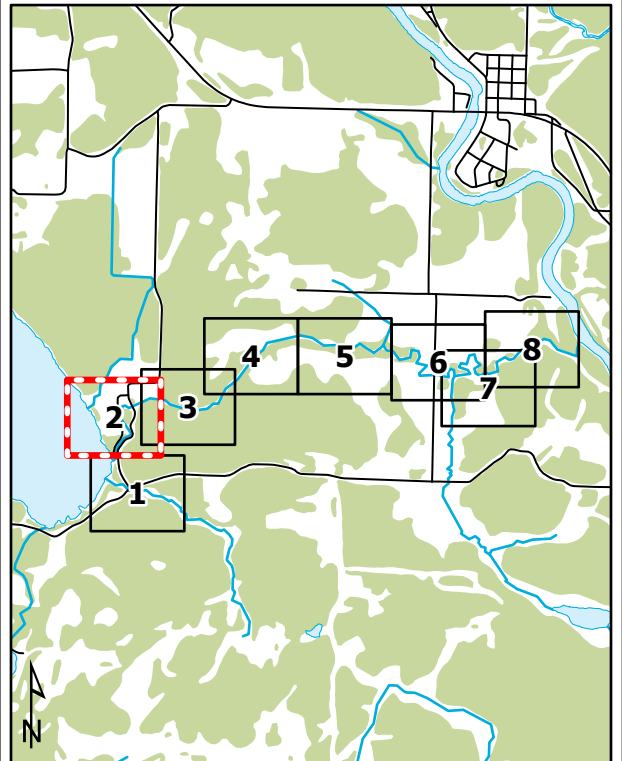
Station #: 6681
Water Surface Elevation: 183.34m

Station #: 6360
Water Surface Elevation: 183.34m

Station #: 5965
Water Surface Elevation: 183.31m

Station #: 5976
Water Surface Elevation: 183.32m

Station #: 5820
Water Surface Elevation: 183.31m



1. The flood inundation limits shown on this map are estimated limits associated with modelling flows and water levels as found in the Hatch report titled "Huron Shores Floodplain Mapping Technical Report", Document Number H370886-0000-2B0-230-0001.
2. The method, procedures, and assumptions used to develop these limits were approximate and therefore these maps should only be used as guidance. Actual areas inundated will depend on actual flood hydrograph characteristics and may differ from the hydrograph characteristics adopted for this study.
3. This map is for illustrative purposes only. Information contained herein is not a substitute for professional review or site survey and is subject to change without notice. The District Municipality of Huron Shores and Hatch Ltd. take no responsibility for, nor guarantee, the accuracy of the information contained on this map. Any interpretation or conclusions drawn from this map are the sole responsibility of the user.
4. LiDAR (Light Detection and Ranging) survey data collected October 28th, 2021 by Tulloch.
5. Contains information used under the Open Government License - Ontario; Resources: Railway, Ontario Road Network, Buildings, Woodlands, Wetlands.

LEGEND

- Railway
- Road
- Contour (5m)
- Building (As Symbol)
- Building (To Scale)
- Parcel Boundary
- Waterbody
- Flow Direction
- Dam
- Climate Change Proxy Floodway
- 50-Year Floodline
- Regulatory Floodline (100-Year Flood)
- Climate Change Proxy Floodline
- Cross Section (Climate Change Proxy Floodline Elevation)

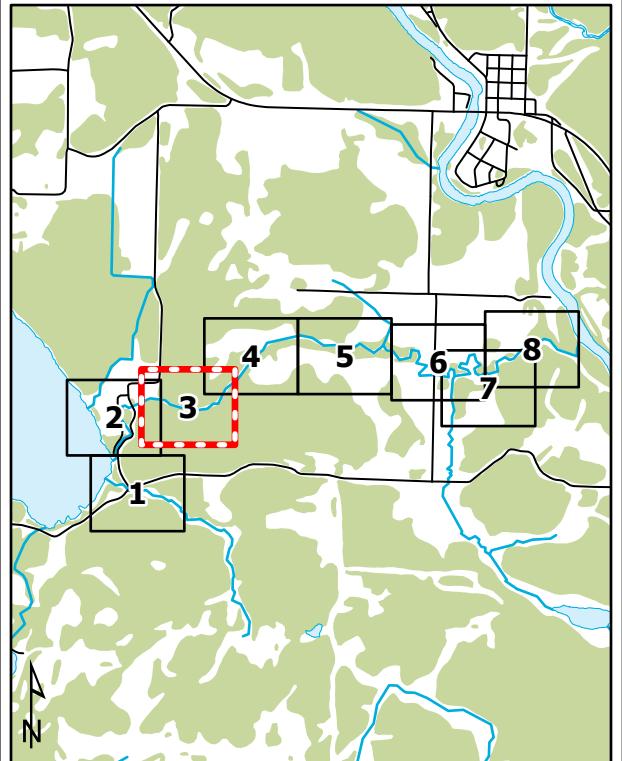
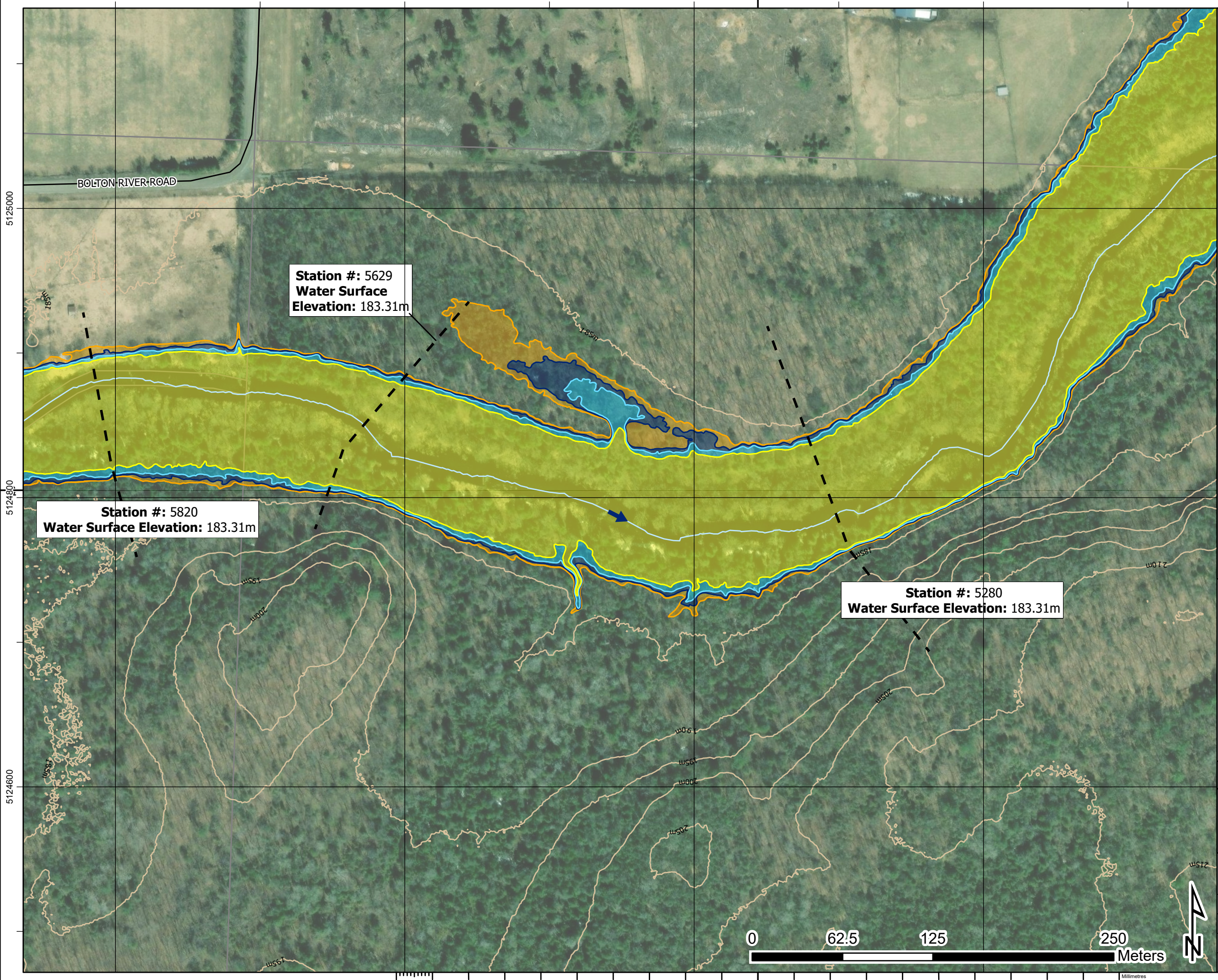
BOLTON RIVER

District Municipality of Huron Shores - Floodplain Mapping
Bolton River
50-Year, Regulatory, and Climate Change Proxy Event
Flood Inundation Map

| | | | |
|---|-----------------------------|--------------------------------|-------------------------------|
| HATCH | | | |
| date - yr / month / day 2024/04/30 | projection ZONE 17N | mapped by J. SNELGROVE | checked by F. MASOOM |
| numerical scale 1:2,500 | vertical datum CGVD 2013 | modeled by F. MASOOM | model reviewed by S. THAPA |
| horizontal datum UTM NAD 1983 CSRS | authorized by S. THAPA | service layer credits MAXAR | |
| report document no H370886-0000-2B0-230-0001 | | sheet 2 OF 8 | rev 1 |

LIMITS OF MAPPING
(SEE BRIGHT LAKE MAPS)





1. The flood inundation limits shown on this map are estimated limits associated with modelling flows and water levels as found in the Hatch report titled "Huron Shores Floodplain Mapping Technical Report", Document Number H370886-0000-2B0-230-0001.
2. The method, procedures, and assumptions used to develop these limits were approximate and therefore these maps should only be used as guidance. Actual areas inundated will depend on actual flood hydrograph characteristics and may differ from the hydrograph characteristics adopted for this study.
3. This map is for illustrative purposes only. Information contained herein is not a substitute for professional review or site survey and is subject to change without notice. The District Municipality of Huron Shores and Hatch Ltd. take no responsibility for, nor guarantee, the accuracy of the information contained on this map. Any interpretation or conclusions drawn from this map are the sole responsibility of the user.
4. LiDAR (Light Detection and Ranging) survey data collected October 28th, 2021 by Tulloch.
5. Contains information used under the Open Government License - Ontario; Resources: Railway, Ontario Road Network, Buildings, Woodlands, Wetlands.

LEGEND

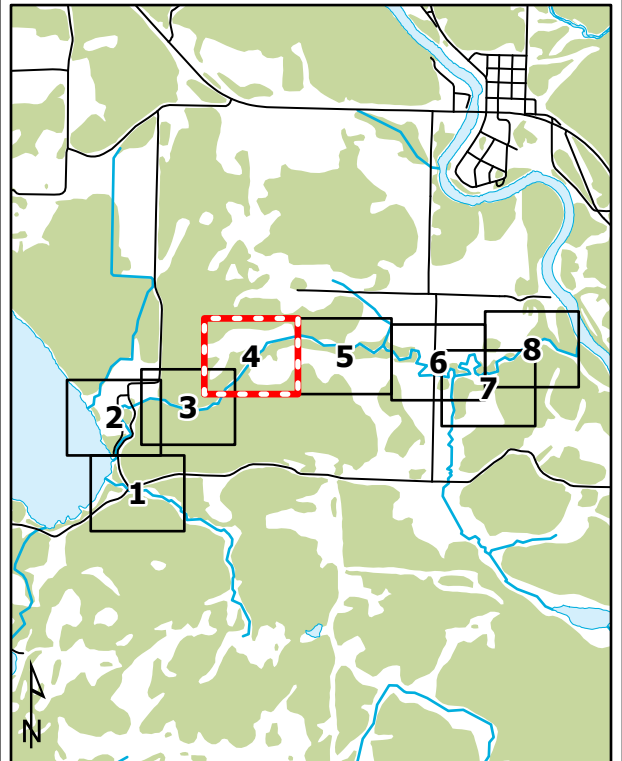
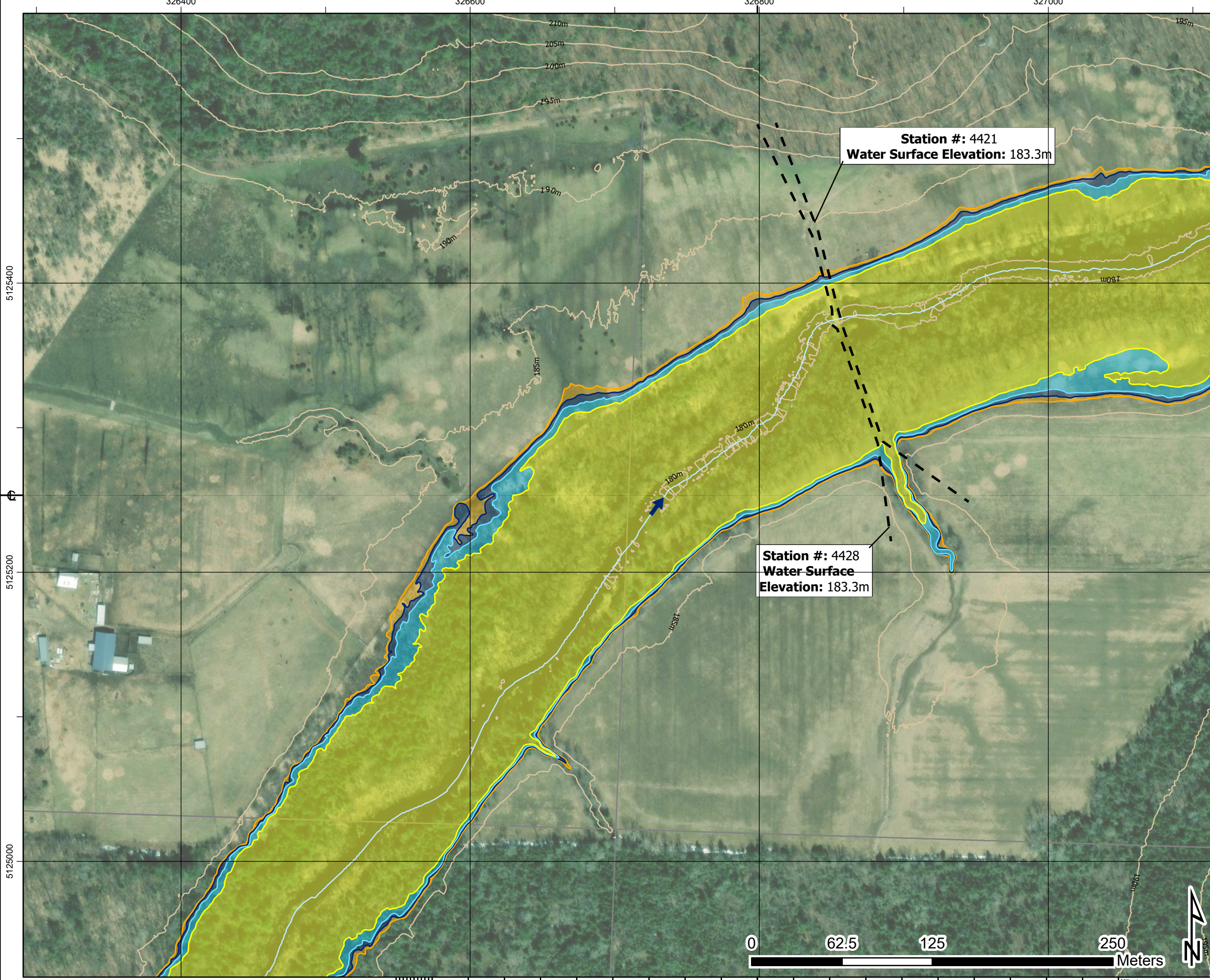
| | |
|----------------------|--|
| Railway | Dam |
| Road | Climate Change Proxy Floodway |
| Contour (5m) | 50-Year Floodline |
| Building (As Symbol) | Regulatory Floodline (100-Year Flood) |
| Building (To Scale) | Climate Change Proxy Floodline |
| Parcel Boundary | Cross Section (Climate Change Proxy Floodline Elevation) |
| Waterbody | Flow Direction |

BOLTON RIVER

District Municipality of Huron Shores - Floodplain Mapping
Bolton River
50-Year, Regulatory, and Climate Change Proxy Event
Flood Inundation Map

| | | | |
|---|-----------------------------|---|-------------------------------|
| | | | |
| date - yr / month / day 2024/04/30 | projection ZONE 17N | mapped by J. SNELGROVE | checked by F. MASOOM |
| numerical scale 1:2,500 | vertical datum CGVD 2013 | modeled by F. MASOOM | model reviewed by S. THAPA |
| horizontal datum UTM NAD 1983 CSRS | authorized by S. THAPA | service layer credits MAXAR, MICROSOFT | |
| report document no H370886-0000-2B0-230-0001 | sheet 3 OF 8 | rev 1 | |





1. The flood inundation limits shown on this map are estimated limits associated with modelling flows and water levels as found in the Hatch report titled "Huron Shores Floodplain Mapping Technical Report", Document Number H370886-0000-2B0-230-0001.
2. The method, procedures, and assumptions used to develop these limits were approximate and therefore these maps should only be used as guidance. Actual areas inundated will depend on actual flood hydrograph characteristics and may differ from the hydrograph characteristics adopted for this study.
3. This map is for illustrative purposes only. Information contained herein is not a substitute for professional review or site survey and is subject to change without notice. The District Municipality of Huron Shores and Hatch Ltd. take no responsibility for, nor guarantee, the accuracy of the information contained on this map. Any interpretation or conclusions drawn from this map are the sole responsibility of the user.
4. LiDAR (Light Detection and Ranging) survey data collected October 28th, 2021 by Tulloch.
5. Contains information used under the Open Government License - Ontario; Resources: Railway, Ontario Road Network, Buildings, Woodlands, Wetlands.

LEGEND

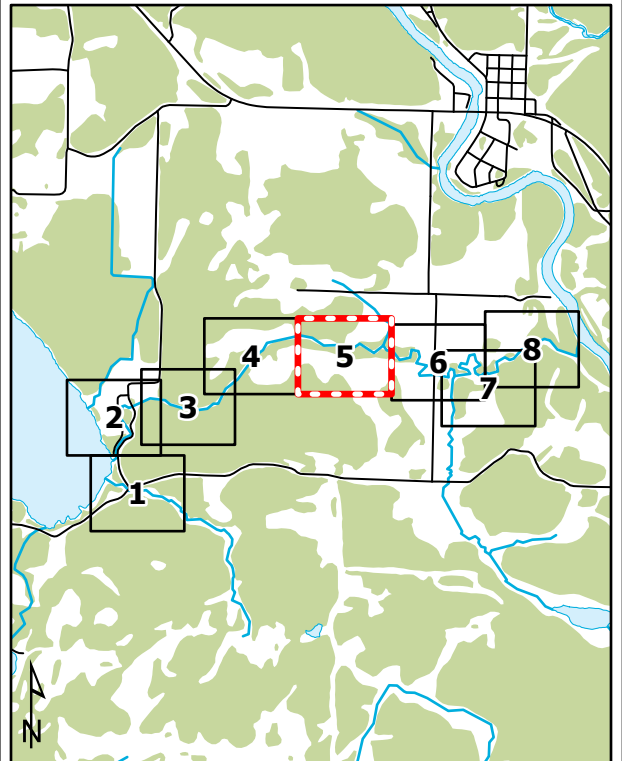
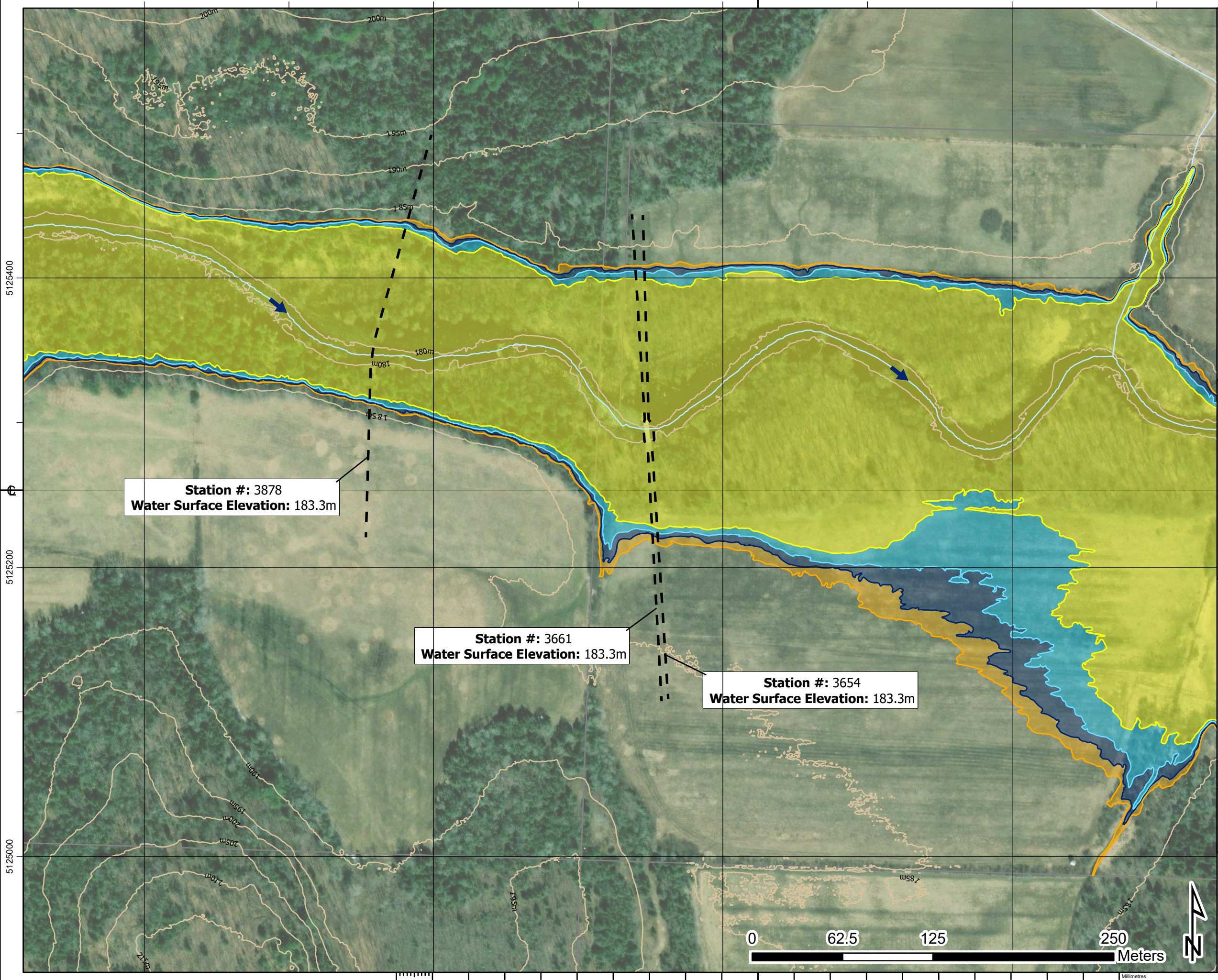
| | | |
|------------------------|--------------------------------|--|
| —+— Railway | | Flow Direction |
| — Road | Dam | Climate Change Proxy Floodway |
| — Contour (5m) | 50-Year Floodline | Regulatory Floodline (100-Year Flood) |
| ● Building (As Symbol) | Climate Change Proxy Floodline | Cross Section (Climate Change Proxy Floodline Elevation) |
| ■ Building (To Scale) | | |
| □ Parcel Boundary | | |
| ■ Waterbody | | |

BOLTON RIVER

District Municipality of Huron Shores - Floodplain Mapping
Bolton River
50-Year, Regulatory, and Climate Change Proxy Event
Flood Inundation Map

| | | | |
|---|-----------------------------|---|-------------------------------|
| | | | |
| date - yr / month / day 2024/04/30 | projection ZONE 17N | mapped by J. SNELGROVE | checked by F. MASOOM |
| numerical scale 1:2,500 | vertical datum CGVD 2013 | modeled by F. MASOOM | model reviewed by S. THAPA |
| horizontal datum UTM NAD 1983 CSRS | authorized by S. THAPA | service layer credits MAXAR, MICROSOFT | |
| report document no H370886-0000-2B0-230-0001 | | sheet 4 OF 8 | rev 1 |

Approved for Use - 2024-05-03



1. The flood inundation limits shown on this map are estimated limits associated with modelling flows and water levels as found in the Hatch report titled "Huron Shores Floodplain Mapping Technical Report", Document Number H370886-0000-2B0-230-0001.
2. The method, procedures, and assumptions used to develop these limits were approximate and therefore these maps should only be used as guidance. Actual areas inundated will depend on actual flood hydrograph characteristics and may differ from the hydrograph characteristics adopted for this study.
3. This map is for illustrative purposes only. Information contained herein is not a substitute for professional review or site survey and is subject to change without notice. The District Municipality of Huron Shores and Hatch Ltd. take no responsibility for, nor guarantee, the accuracy of the information contained on this map. Any interpretation or conclusions drawn from this map are the sole responsibility of the user.
4. LiDAR (Light Detection and Ranging) survey data collected October 28th, 2021 by Tulloch.
5. Contains information used under the Open Government License - Ontario; Resources: Railway, Ontario Road Network, Buildings, Woodlands, Wetlands.

LEGEND

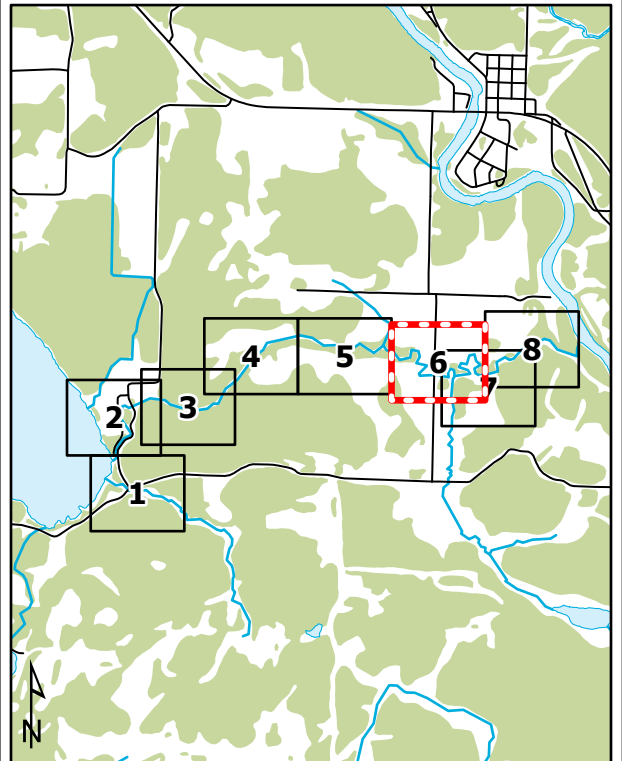
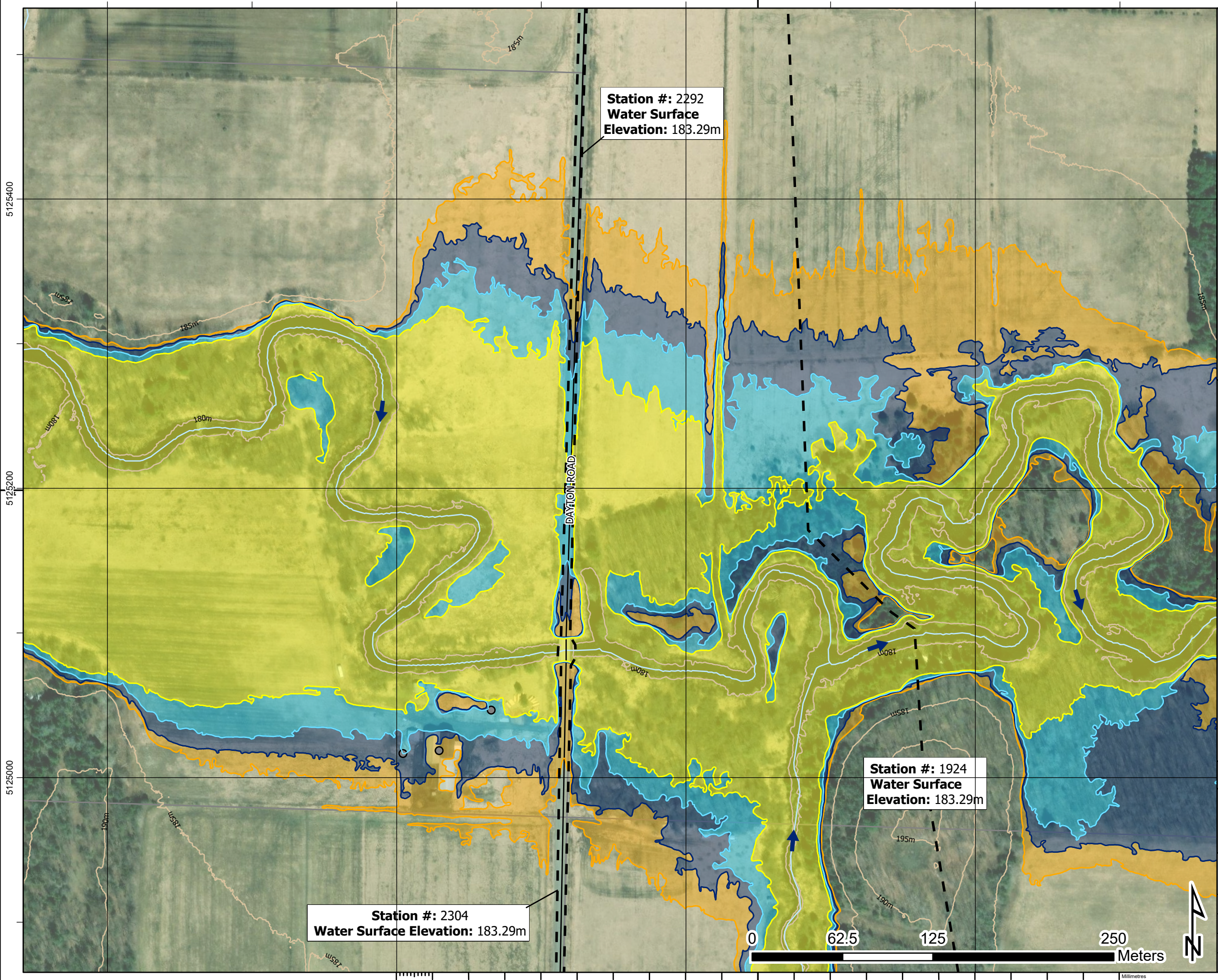
| | | | |
|--|----------------------|--|--|
| | Railway | | Dam |
| | Road | | Climate Change Proxy Floodway |
| | Contour (5m) | | 50-Year Floodline |
| | Building (As Symbol) | | Regulatory Floodline (100-Year Flood) |
| | Building (To Scale) | | Climate Change Proxy Floodline |
| | Parcel Boundary | | Cross Section (Climate Change Proxy Floodline Elevation) |
| | Waterbody | | Flow Direction |

BOLTON RIVER

District Municipality of Huron Shores - Floodplain Mapping
Bolton River
50-Year, Regulatory, and Climate Change Proxy Event
Flood Inundation Map

| | | | |
|---------------------------|----------------|-----------------------|-------------------|
| | | | |
| date - yr / month / day | projection | mapped by | checked by |
| 2024/04/30 | ZONE 17N | J. SNELGROVE | F. MASOOM |
| numerical scale | vertical datum | modeled by | model reviewed by |
| 1:2,500 | CGVD 2013 | F. MASOOM | S. THAPA |
| horizontal datum | authorized by | service layer credits | |
| UTM NAD 1983 CSRS | S. THAPA | MAXAR | |
| report document no | | sheet | rev |
| H370886-0000-2B0-230-0001 | | 5 OF 8 | 1 |





- The flood inundation limits shown on this map are estimated limits associated with modelling flows and water levels as found in the Hatch report titled "Huron Shores Floodplain Mapping Technical Report", Document Number H370886-0000-2B0-230-0001.
- The method, procedures, and assumptions used to develop these limits were approximate and therefore these maps should only be used as guidance. Actual areas inundated will depend on actual flood hydrograph characteristics and may differ from the hydrograph characteristics adopted for this study.
- This map is for illustrative purposes only. Information contained herein is not a substitute for professional review or site survey and is subject to change without notice. The District Municipality of Huron Shores and Hatch Ltd. take no responsibility for, nor guarantee, the accuracy of the information contained on this map. Any interpretation or conclusions drawn from this map are the sole responsibility of the user.
- LiDAR (Light Detection and Ranging) survey data collected October 28th, 2021 by Tulloch.
- Contains information used under the Open Government License - Ontario; Resources: Railway, Ontario Road Network, Buildings, Woodlands, Wetlands.

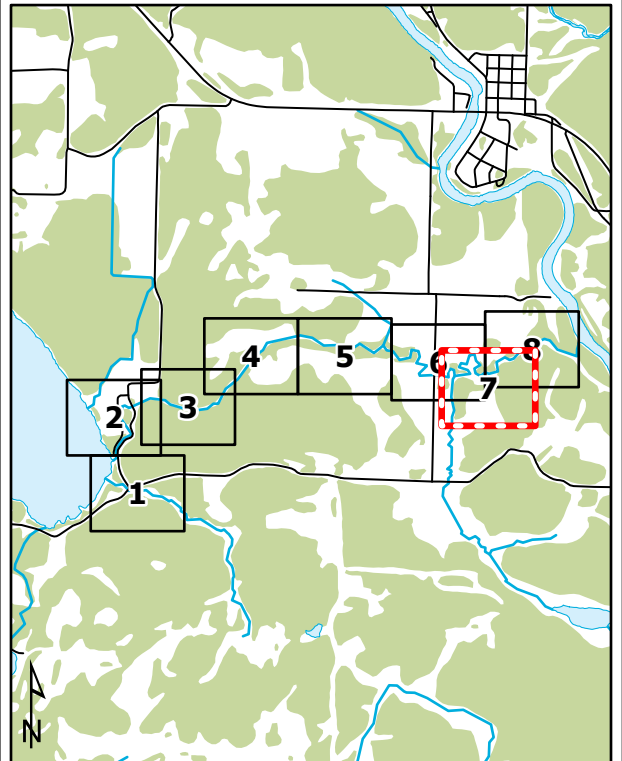
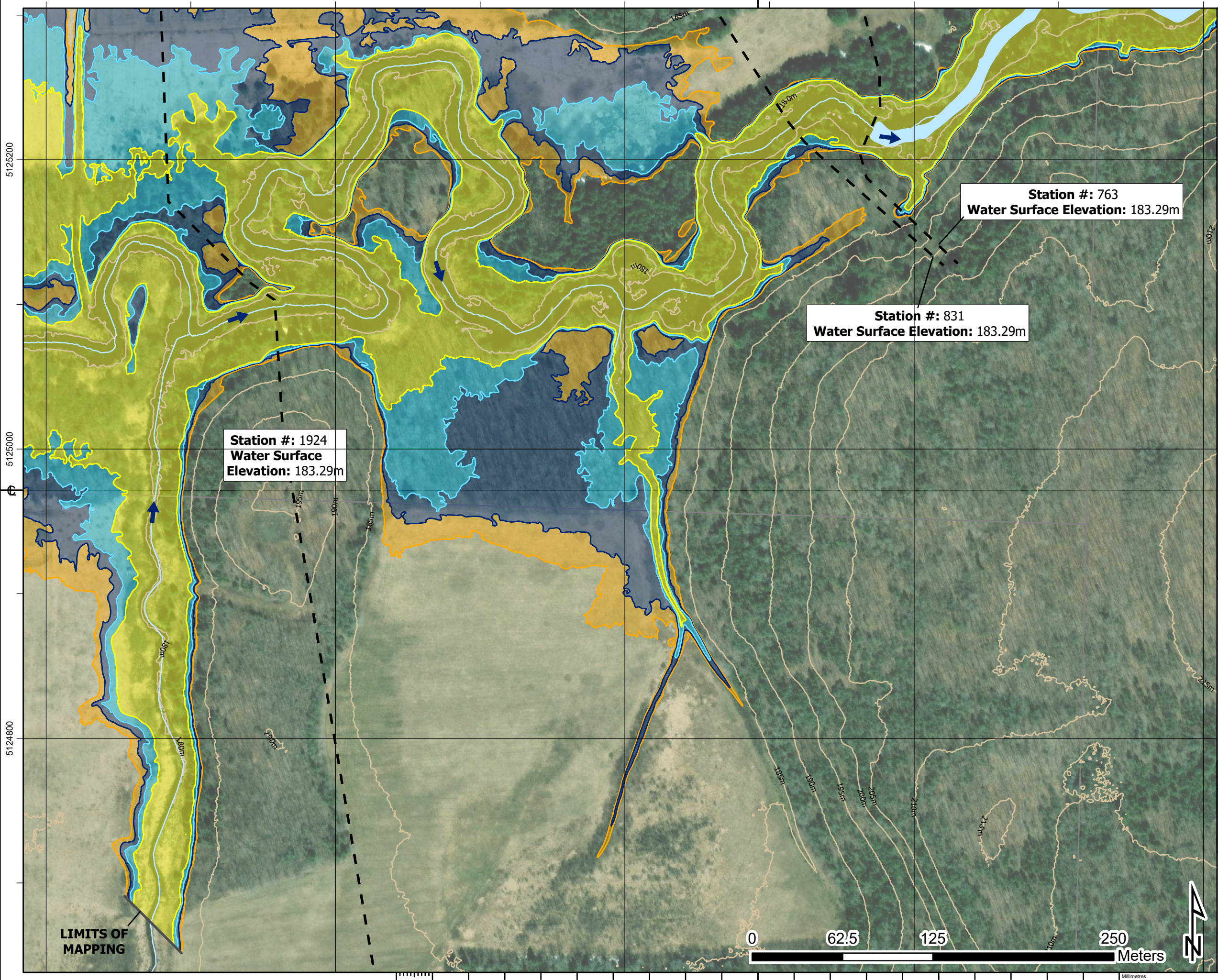
LEGEND

- Railway
- Road
- Contour (5m)
- Building (As Symbol)
- Building (To Scale)
- Parcel Boundary
- Waterbody
- Flow Direction
- Dam
- Climate Change Proxy Floodway
- 50-Year Floodline
- Regulatory Floodline (100-Year Flood)
- Climate Change Proxy Floodline
- Cross Section (Climate Change Proxy Floodline Elevation)

BOLTON RIVER

District Municipality of Huron Shores - Floodplain Mapping
Bolton River
50-Year, Regulatory, and Climate Change Proxy Event
Flood Inundation Map

| | | | |
|---------------------------------------|-----------------------------|--------------------------------|---|
| HATCH | | | |
| date - yr / month / day 2024/04/30 | projection ZONE 17N | mapped by J. SNELGROVE | checked by F. MASOOM |
| numerical scale 1:2,500 | vertical datum CGVD 2013 | modelled by F. MASOOM | model reviewed by S. THAPA |
| horizontal datum UTM NAD 1983 CSRS | authorized by S. THAPA | service layer credits MAXAR | report document no H370886-0000-2B0-230-0001 |
| | | | sheet 6 OF 8 |
| | | | rev 1 |



1. The flood inundation limits shown on this map are estimated limits associated with modelling flows and water levels as found in the Hatch report titled "Huron Shores Floodplain Mapping Technical Report", Document Number H370886-0000-2B0-230-0001.
2. The method, procedures, and assumptions used to develop these limits were approximate and therefore these maps should only be used as guidance. Actual areas inundated will depend on actual flood hydrograph characteristics and may differ from the hydrograph characteristics adopted for this study.
3. This map is for illustrative purposes only. Information contained herein is not a substitute for professional review or site survey and is subject to change without notice. The District Municipality of Huron Shores and Hatch Ltd. take no responsibility for, nor guarantee, the accuracy of the information contained on this map. Any interpretation or conclusions drawn from this map are the sole responsibility of the user.
4. LiDAR (Light Detection and Ranging) survey data collected October 28th, 2021 by Tulloch.
5. Contains information used under the Open Government License - Ontario; Resources: Railway, Ontario Road Network, Buildings, Woodlands, Wetlands.

LEGEND

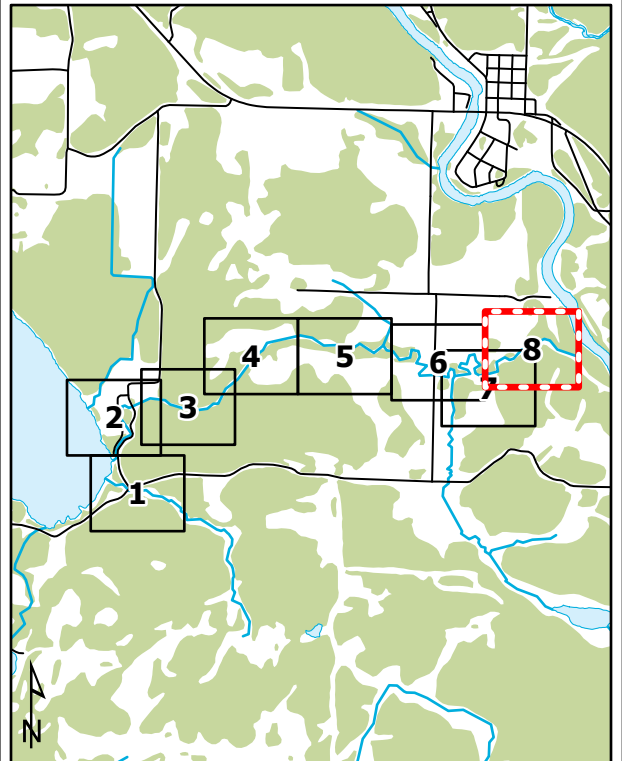
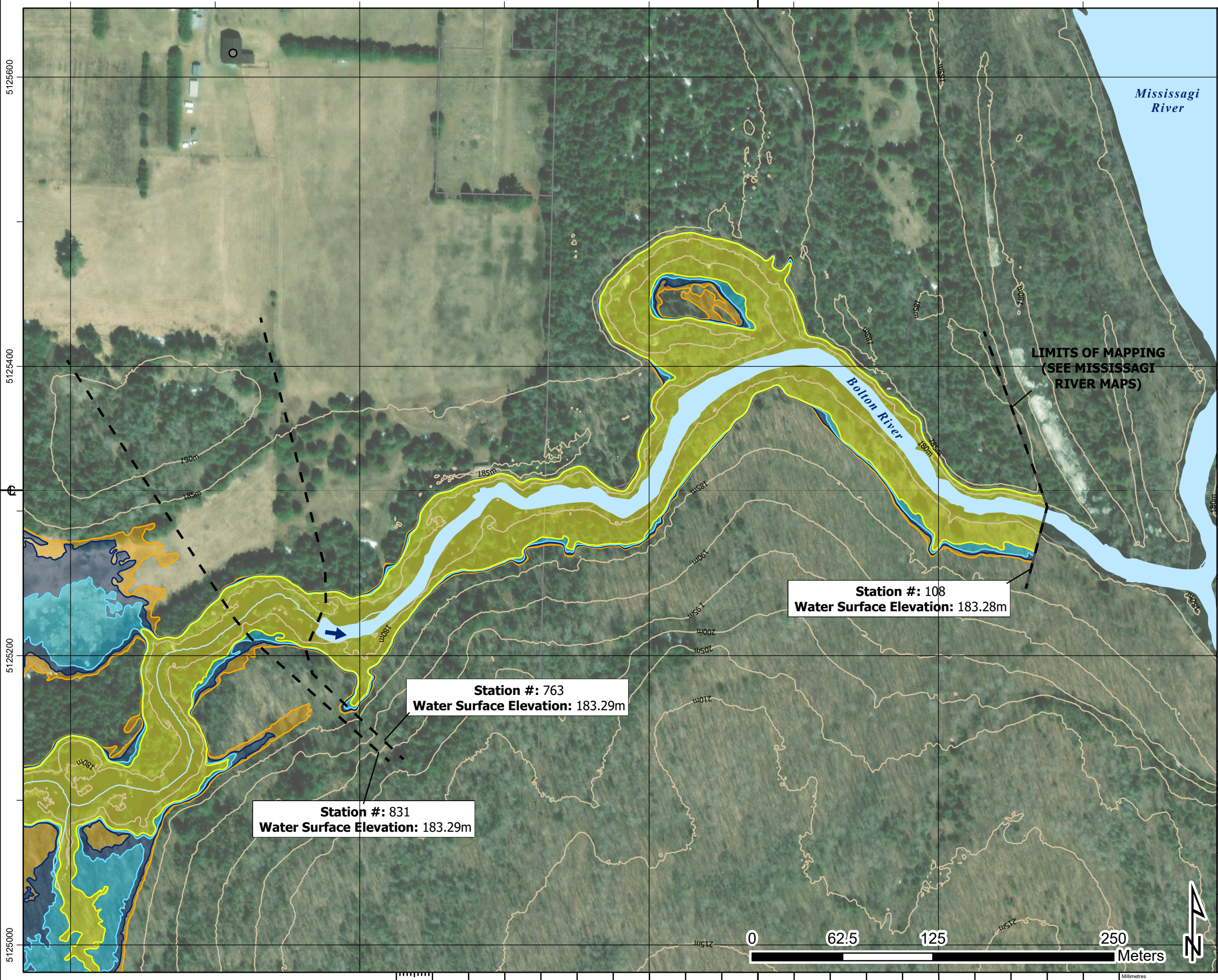
- Railway
- Road
- Contour (5m)
- Building (As Symbol)
- Building (To Scale)
- Parcel Boundary
- Waterbody
- Flow Direction
- Dam
- Climate Change Proxy Floodway
- 50-Year Floodline
- Regulatory Floodline (100-Year Flood)
- Climate Change Proxy Floodline
- Cross Section (Climate Change Proxy Floodline Elevation)

BOLTON RIVER

District Municipality of Huron Shores - Floodplain Mapping
Bolton River
50-Year, Regulatory, and Climate Change Proxy Event
Flood Inundation Map

| | | | |
|---|-----------------------------|--------------------------------|-------------------------------|
| HATCH | | | |
| date - yr / month / day 2024/04/30 | projection ZONE 17N | mapped by J. SNELGROVE | checked by F. MASOOM |
| numerical scale 1:2,500 | vertical datum CGVD 2013 | modeled by F. MASOOM | model reviewed by S. THAPA |
| horizontal datum UTM NAD 1983 CSRS | authorized by S. THAPA | service layer credits MAXAR | |
| report document no H370886-0000-2B0-230-0001 | | sheet 7 OF 8 | rev 1 |

Approved for Use - 2024-05-03



1. The flood inundation limits shown on this map are estimated limits associated with modelling flows and water levels as found in the Hatch report titled "Huron Shores Floodplain Mapping Technical Report", Document Number H370886-0000-2B0-230-0001.
2. The method, procedures, and assumptions used to develop these limits were approximate and therefore these maps should only be used as guidance. Actual areas inundated will depend on actual flood hydrograph characteristics and may differ from the hydrograph characteristics adopted for this study.
3. This map is for illustrative purposes only. Information contained herein is not a substitute for professional review or site survey and is subject to change without notice. The District Municipality of Huron Shores and Hatch Ltd. take no responsibility for, nor guarantee, the accuracy of the information contained on this map. Any interpretation or conclusions drawn from this map are the sole responsibility of the user.
4. LiDAR (Light Detection and Ranging) survey data collected October 28th, 2021 by Tulloch.
5. Contains information used under the Open Government License - Ontario; Resources: Railway, Ontario Road Network, Buildings, Woodlands, Wetlands.

LEGEND

- Railway
- Road
- Contour (5m)
- Building (As Symbol)
- Building (To Scale)
- Parcel Boundary
- Waterbody
- Flow Direction
- Dam
- Climate Change Proxy Floodway
- 50-Year Floodline
- Regulatory Floodline (100-Year Flood)
- Climate Change Proxy Floodline
- Cross Section (Climate Change Proxy Floodline Elevation)

BOLTON RIVER

District Municipality of Huron Shores - Floodplain Mapping
Bolton River
50-Year, Regulatory, and Climate Change Proxy Event
Flood Inundation Map

| | | | |
|---|-----------------------------|--------------------------------|-------------------------------|
| HATCH | | | |
| date - yr / month / day 2024/04/30 | projection ZONE 17N | mapped by J. SNELGROVE | checked by F. MASOOM |
| numerical scale 1:2,500 | vertical datum CGVD 2013 | modeled by F. MASOOM | model reviewed by S. THAPA |
| horizontal datum UTM NAD 1983 CSRS | authorized by S. THAPA | service layer credits MAXAR | sheet 8 OF 8 |
| report document no H370886-0000-2B0-230-0001 | | rev 1 | |